

**Oakland Community College  
Official Enrollment  
Summer Term**

**Auburn Hills**

**Student Credit Hours**

	2001	2000	1999	1998	1997	1996	1995	1994
Projected	5,072	5,037	5,047	4,635	4,401	5,589	5,237	6,617
Actual First Day Enrollment	4,535	4,148	4,109	4,354	4,699	4,902	5,603	5,306
Actual One Tenth Day Enrollment	4,348	3,883	4,068	4,262	4,589	4,629	5,355	5,237
Actual End of Session (Credit)		4,042	4,168	4,559	4,643	4,683	5,534	5,237
Actual End of Session (Non Credit)	0	1,920	1,007	488	298	110	1,191	819
Actual End of Session Total		5,962	5,175	5,047	4,941	4,793	6,725	6,056

**Headcount**

	2001	2000	1999	1998	1997	1996	1995	1994
Actual First Day Enrollment	1,209	1,076	1,062	1,158	1,208	1,242	1,430	1,399
Actual One Tenth Day Enrollment	1,169	1,024	1,058	1,136	1,186	1,186	1,372	1,375
Actual End of Session (Credit)		1,068	1,086	1,195	1,204	1,201	1,426	1,369
Actual End of Session (Non Credit)	0	1,464	1,070	702	411	135	874	303
Actual End of Session Total		2,532	2,156	1,897	1,615	1,336	2,300	1,672

**Credit Hours Per Student**

	2001	2000	1999	1998	1997	1996	1995	1994
Actual First Day Enrollment Credit Hours	4,535	4,148	4,109	4,354	4,699	4,902	5,603	5,306
Actual First Day Enrollment Headcount	1,209	1,076	1,062	1,158	1,208	1,242	1,430	1,399
Actual OneTenth Day Credit Hours	4,348	3,883	4,068	4,262	4,589	4,629	5,355	5,237
Actual One Tenth Day Headcount	1,169	1,024	1,058	1,136	1,186	1,186	1,372	1,375

**Oakland Community College  
Official Enrollment  
Summer Term**

**Highland Lakes**

**Student Credit Hours**

	2001	2000	1999	1998	1997	1996	1995	1994
Projected	1,015	1,008	1,010	1,070	1,023	1,462	1,228	1,849
Actual First Day Enrollment	1,290	1,313	1,000	978	1,140	1,104	1,540	1,326
Actual One Tenth Day Enrollment	1,289	1,309	968	954	1,072	1,053	1,590	1,263
Actual End of Session (Credit)		1,331	968	972	1,072	1,089	1,448	1,257
Actual End of Session (Non Credit)	0	18	93	38	41	1	25	0
Actual End of Session Total		1,349	1,061	1,010	1,113	1,090	1,473	1,257

**Headcount**

	2001	2000	1999	1998	1997	1996	1995	1994
Actual First Day Enrollment	399	398	323	327	390	403	510	707
Actual One Tenth Day Enrollment	395	394	325	322	371	395	515	672
Actual End of Session (Credit)		400	325	340	371	404	480	668
Actual End of Session (Non Credit)	0	93	149	146	217	3	122	4
Actual End of Session Total		493	474	486	588	407	602	672

**Credit Hours Per Student**

	2001	2000	1999	1998	1997	1996	1995	1994
Actual First Day Enrollment Credit Hours	1,290	1,313	1,000	978	1,140	1,104	1,540	1,326
Actual First Day Enrollment Headcount	399	398	323	327	390	403	510	707
Actual OneTenth Day Credit Hours	1,289	1,309	968	954	1,072	1,053	1,590	1,263
Actual OneTenth Day Headcount	395	394	325	322	371	395	515	672

**Oakland Community College  
Official Enrollment  
SummerTerm**

**Orchard Ridge**

**Student Credit Hours**

	2001	2000	1999	1998	1997	1996	1995	1994
Projected	6,086	6,045	6,056	5,662	5,554	6,585	6,599	7,875
Actual First Day Enrollment	6,575	6,288	5,998	5,709	5,816	5,991	6,926	7,082
Actual One Tenth Day Enrollment	6,614	6,111	5,949	5,608	5,672	5,910	6,717	6,746
Actual End of Session (Credit)		6,060	5,949	5,608	5,672	5,910	6,520	6,746
End of Session (Non Credit)	0	631	653	448	509	0	440	705
End of Session Total		6,691	6,602	6,056	6,181	5,910	6,960	7,451

**Headcount**

	2001	2000	1999	1998	1997	1996	1995	1994
Actual First Day Enrollment	1,655	1,586	1,530	1,502	1,493	1,603	1,861	1,373
Actual One Tenth Day Enrollment	1,683	1,549	1,535	1,482	1,476	1,591	1,818	1,326
Actual End of Session (Credit)		1,563	1,535	1,482	1,476	1,591	1,750	1,314
End of Session (Non Credit)		381	422	313	392	0	350	516
End of Session Total		1,944	1,957	1,795	1,868	1,591	2,100	1,830

**Credit Hours Per Student**

	2001	2000	1999	1998	1997	1996	1995	1994
Actual First Day Enrollment Credit Hours	6,575	6,288	5,998	5,709	5,816	5,991	6,926	7,082
Actual First Day Enrollment Headcount	1,655	1,586	1,530	1,502	1,493	1,603	1,861	1,373
Actual OneTenth Day Credit Hours	6,614	6,111	5,949	5,608	5,672	5,910	6,717	6,746
Actual One Tenth Day Headcount	1,683	1,549	1,535	1,482	1,476	1,591	1,818	1,326

**Oakland Community College  
Official Enrollment  
Summer Term Term**

**Royal Oak**

**Student Credit Hours**

	2001	2000	1999	1998	1997	1996	1995	1994
Projected	3,824	3,798	3,805	3,429	3,542	3,592	3,500	3,577
Actual First Day Enrollment	3,423	3,534	3,055	3,348	3,432	3,420	3,488	3,575
Actual One Tenth Day Enrollment	3,457	3,414	3,077	3,345	3,435	3,519	3,577	3,488
Actual End of Session (Credit)		3,458	3,077	3,775	3,434	3,769	3,556	3,499
Actual End of Session (Non Credit)	0	0	0	30	1	1	477	143
Actual End of Session Total		3,458	3,077	3,805	3,435	3,770	4,033	3,642

**Headcount**

	2001	2000	1999	1998	1997	1996	1995	1994
Actual First Day Enrollment	900	939	802	878	927	922	947	1,101
Actual One Tenth Day Enrollment	919	901	803	889	938	937	973	1,066
Actual End of Session (Credit)		913	803	947	938	988	970	1,096
Actual End of Session (Non Credit)	0	0	0	28	0	1	145	84
Actual End of Session Total		913	803	975	938	989	1,115	1,180

**Credit Hours Per Student**

	2001	2000	1999	1998	1997	1996	1995	1994
Actual First Day Enrollment Credit Hours	3,423	3,534	3,055	3,348	3,432	3,420	3,488	3,575
Actual First Day Enrollment Headcount	900	939	802	878	927	922	947	1,101
Actual OneTenth Day Credit Hours	3,457	3,414	3,077	3,345	3,435	3,519	3,577	3,488
Actual OneTenth Day Headcount	919	901	803	889	938	937	973	1,066

**Oakland Community College  
Official Enrollment  
Summer Term  
Southfield**

**Student Credit Hours**

	2001	2000	1999	1998	1997	1996	1995	1994
Projected	411	408	409	568	470	717	600	1,461
Actual First Day Enrollment	643	330	284	390	434	488	749	580
Actual One Tenth Day Enrollment	646	370	273	409	446	500	783	568
Actual End of Session (Credit)		370	273	409	569	500	711	568
Actual End of Session (Non Credit)	0	0	0	0	191	88	0	0
Actual End of Session Total		370	273	409	760	588	711	568

**Headcount**

	2001	2000	1999	1998	1997	1996	1995	1994
Actual First Day Enrollment	193	86	74	98	109	121	189	37
Actual One Tenth Day Enrollment	197	96	71	103	113	124	196	36
Actual End of Session (Credit)		96	71	103	126	124	178	36
Actual End of Session (Non Credit)	0	0	0	0	48	8	0	0
Actual End of Session Total		96	71	103	174	132	178	36

**Credit Hours Per Student**

	2001	2000	1999	1998	1997	1996	1995	1994
Actual First Day Enrollment Credit Hours	643	330	284	390	434	488	749	580
Actual First Day Enrollment Headcount	193	86	74	98	109	121	189	37
Actual OneTenth Day Credit Hours	646	370	273	409	446	500	783	568
Actual OneTenth Day Headcount	197	96	71	103	113	124	196	36

**Oakland Community College  
Official Enrollment  
Summer Term  
College-Wide Totals**

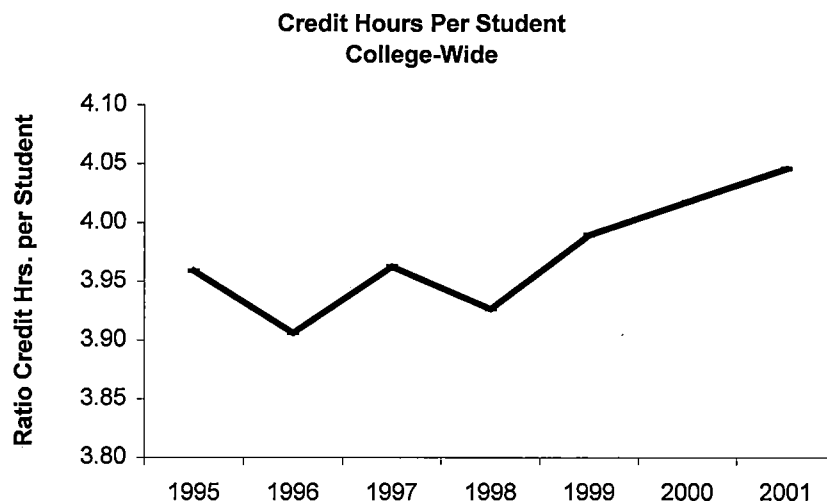
<u>Credit Hours</u>	2001	2000	1999	1998	1997	1996	1995	1994
Projected	16,408	16,296	16,327	15,364	14,990	17,945	17,164	21,379
Actual First Day Enrollment	16,466	15,613	14,446	14,779	15,521	15,905	18,306	17,869
Actual One Tenth Day Enrollment	16,354	15,087	14,335	14,578	15,214	15,611	18,022	17,302
Actual End of Session (Credit)	0	15,261	14,435	15,323	15,390	15,951	17,769	17,307
Actual End of Session (Non Credit)	0	2,569	1,753	1,004	1,040	200	2,133	1,667
Actual End of Session Total	0	17,830	16,188	16,327	16,430	16,151	19,902	18,974

<u>Headcount</u>	2001	2000	1999	1998	1997	1996	1995	1994
Projected Headcount	5,300	5,037	5,047	5,000	2,451	4,652	4,454	5,773
Actual First Day Enrollment	4,070	3,886	3,621	3,764	3,917	4,072	4,624	4,617
Actual One Tenth Day Enrollment	4,084	3,791	3,631	3,735	3,885	4,027	4,587	4,475
Actual End of Session (Credit)		3,866	3,659	3,868	3,916	4,098	4,536	4,483
Actual End of Session (Non Credit)	0	1,938	1,641	1,179	1,068	147	1,457	907
Actual End of Session Total		5,804	5,300	5,047	4,984	4,245	5,993	5,390

<u>Credit Hours Per Student</u>	2001	2000	1999	1998	1997	1996	1995	1994
Actual First Day Enrollment Credit Hours	16,466	15,613	14,446	14,779	15,521	15,905	18,306	17,869
Actual First Day Enrollment Headcount	4,070	3,886	3,621	3,764	3,917	4,072	4,624	4,617
Actual OneTenth Day Credit Hours	16,354	15,087	14,335	14,578	15,214	15,611	18,022	17,302
Actual OneTenth Day Headcount	4,084	3,791	3,631	3,735	3,885	4,027	4,587	4,475

**Oakland Community College  
 Official Enrollment Report  
 First Day of Session, Summer 2001  
 College-wide - Credit Hours Per Student**

	<u>1995</u>	<u>1996</u>	<u>1997</u>	<u>1998</u>	<u>1999</u>	<u>2000</u>	<u>2001</u>	<u>1 Year % Change</u>	<u>5 Year % Change</u>
<b>Actual First Day Credit Hours</b>	18,306	15,905	15,521	14,779	14,446	15,613	16,466	5.5%	6.1%
<b>Actual First Day Headcount</b>	4,624	4,072	3,917	3,764	3,621	3,886	4,070	4.7%	3.9%
<b>Credit Hours Per Student</b>	3.96	3.91	3.96	3.93	3.99	4.02	4.05	0.7%	2.1%

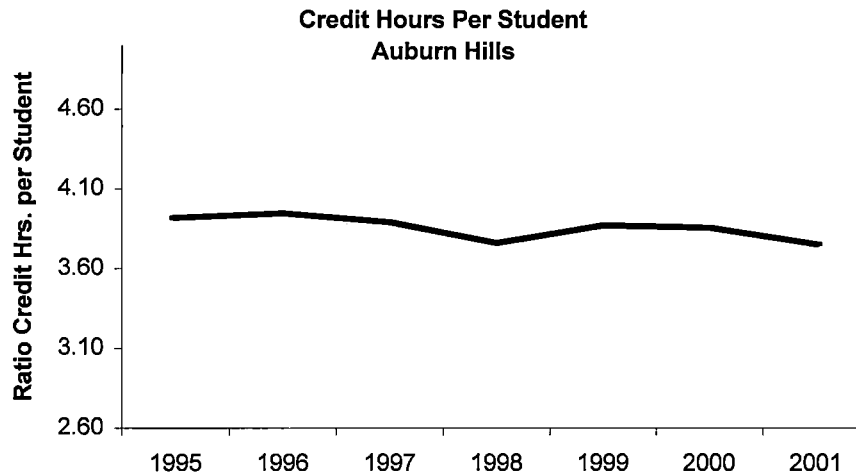


**Summary**

The credit hour totals and headcount totals have fluctuated up and down over the 10 year period but note, the average ratio of credit hours per student has steadily increased.

**Oakland Community College  
 Official Enrollment Report  
 First Day of Session, Summer 2001  
 Auburn Hills - Credit Hours Per Student**

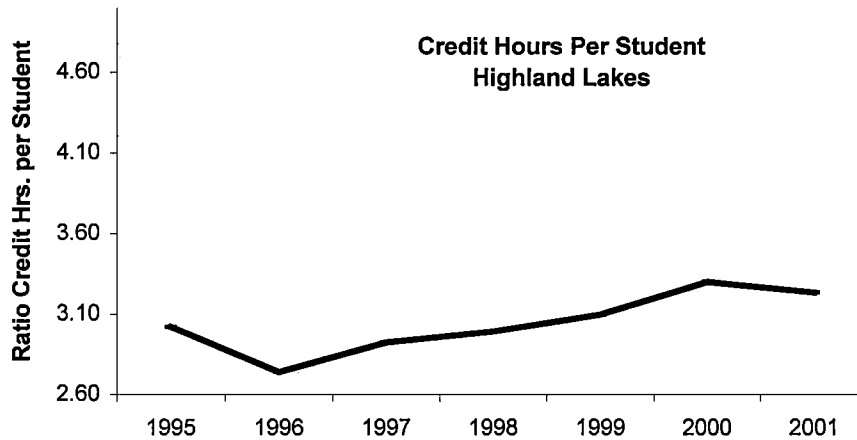
	<u>1995</u>	<u>1996</u>	<u>1997</u>	<u>1998</u>	<u>1999</u>	<u>2000</u>	<u>2001</u>	<u>1 Year % Change</u>	<u>5 Year % Change</u>
<b>Actual First Day Credit Hours</b>	5,603	4,902	4,699	4,354	4,109	4,148	4,535	9.3%	-3.5%
<b>Actual First Day Headcount</b>	1,430	1,242	1,208	1,158	1,062	1,076	1,209	12.4%	0.1%
<b>Credit Hours Per Student</b>	3.92	3.95	3.89	3.76	3.87	3.86	3.75	-2.7%	-3.6%





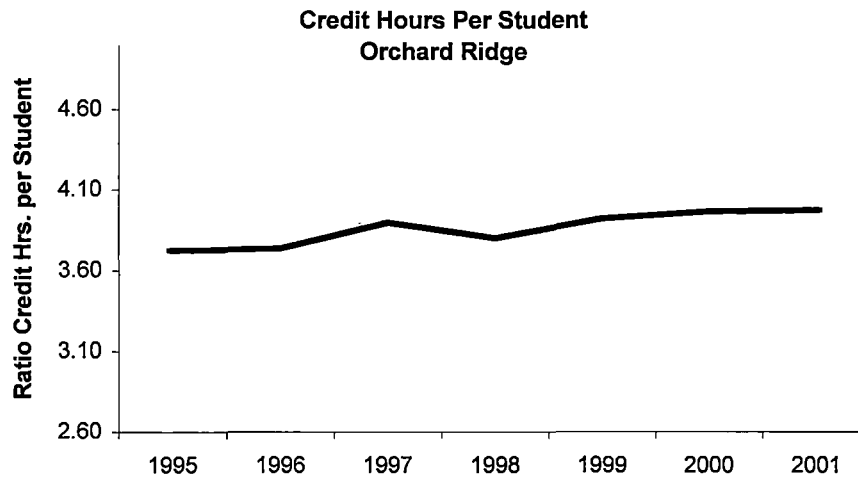
**Oakland Community College  
 Official Enrollment Report  
 First Day of Session, Summer 2001  
 Highland Lakes - Credit Hours Per Student**

	<u>1995</u>	<u>1996</u>	<u>1997</u>	<u>1998</u>	<u>1999</u>	<u>2000</u>	<u>2001</u>	<u>1 Year % Change</u>	<u>5 Year % Change</u>
<b>Actual First Day Credit Hours</b>	1,540	1,104	1,140	978	1,000	1,313	1,290	-1.8%	13.2%
<b>Actual First Day Headcount</b>	510	403	390	327	323	398	399	0.3%	2.3%
<b>Credit Hours Per Student</b>	3.02	2.74	2.92	2.99	3.10	3.30	3.23	-2.0%	10.6%



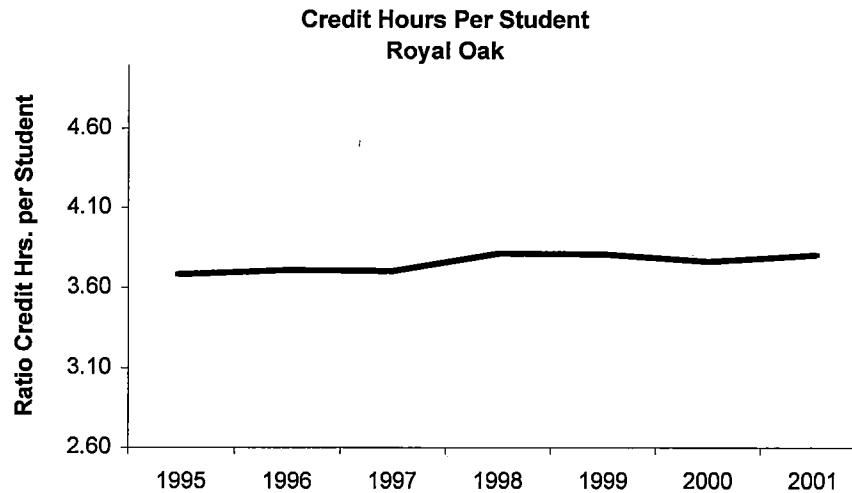
**Oakland Community College  
 Official Enrollment Report  
 First Day of Session, Summer 2001  
 Orchard Ridge - Credit Hours Per Student**

	<u>1995</u>	<u>1996</u>	<u>1997</u>	<u>1998</u>	<u>1999</u>	<u>2000</u>	<u>2001</u>	<u>1 Year % Change</u>	<u>5 Year % Change</u>
<b>Actual First Day Credit Hours</b>	6,926	5,991	5,816	5,709	5,998	6,288	6,575	4.6%	13.1%
<b>Actual First Day Headcount</b>	1,861	1,603	1,493	1,502	1,530	1,586	1,655	4.4%	10.9%
<b>Credit Hours Per Student</b>	3.72	3.74	3.90	3.80	3.92	3.96	3.97	0.2%	2.0%



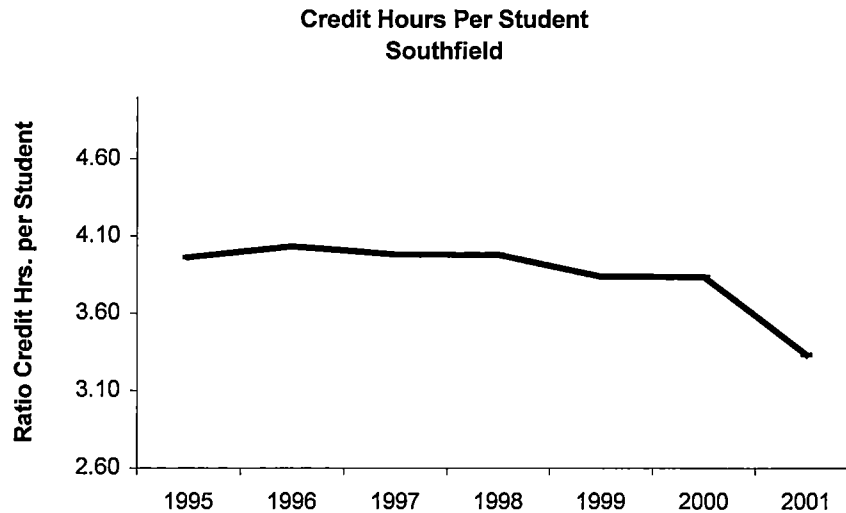
**Oakland Community College  
 Official Enrollment Report  
 First Day of Session, Summer 2001  
 Royal Oak - Credit Hours Per Student**

	<u>1995</u>	<u>1996</u>	<u>1997</u>	<u>1998</u>	<u>1999</u>	<u>2000</u>	<u>2001</u>	<u>1 Year % Change</u>	<u>5 Year % Change</u>
<b>Actual First Day Credit Hours</b>	3,488	3,420	3,432	3,348	3,055	3,534	3,423	-3.1%	-0.3%
<b>Actual First Day Headcount</b>	947	922	927	878	802	939	900	-4.2%	-2.9%
<b>Credit Hours Per Student</b>	3.68	3.71	3.70	3.81	3.81	3.76	3.80	1.1%	2.7%



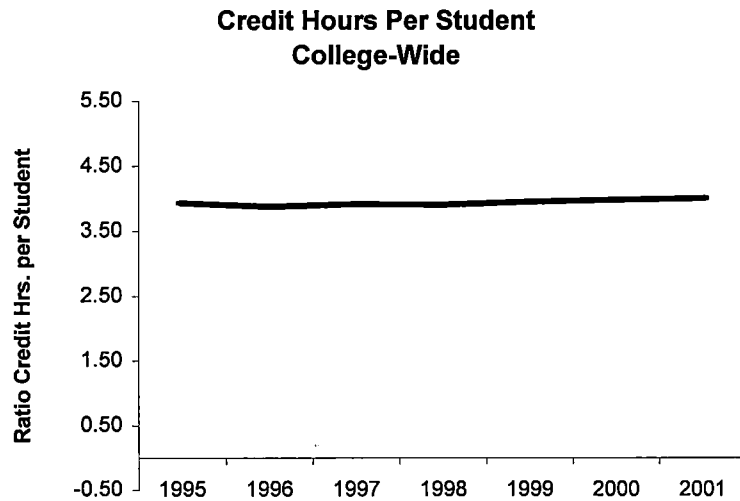
**Oakland Community College  
 Official Enrollment Report  
 First Day of Session, Summer 2001  
 Southfield - Credit Hours Per Student**

	<u>1995</u>	<u>1996</u>	<u>1997</u>	<u>1998</u>	<u>1999</u>	<u>2000</u>	<u>2001</u>	<u>1 Year % Change</u>	<u>5 Year % Change</u>
<b>Actual First Day Credit Hours</b>	749	488	434	390	284	330	643	94.8%	48.2%
<b>Actual First Day Headcount</b>	189	121	109	98	74	86	193	124.4%	77.1%
<b>Credit Hours Per Student</b>	3.96	4.03	3.98	3.98	3.84	3.84	3.33	-13.2%	-16.3%

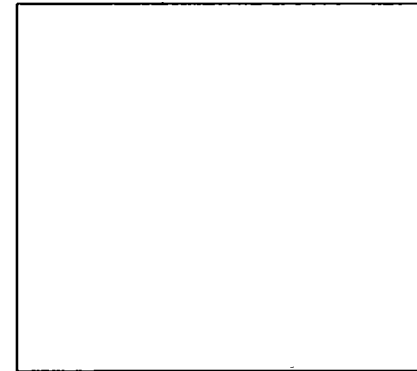


**Oakland Community College  
 Official Enrollment Report  
 One Tenth Day of Session, Summer 2001  
 College-wide - Credit Hours Per Student**

	<u>1995</u>	<u>1996</u>	<u>1997</u>	<u>1998</u>	<u>1999</u>	<u>2000</u>	<u>2001</u>	<u>1 Year % Change</u>	<u>5 Year % Change</u>
Actual OneTenth Day Credit Hrs.	18,022	15,611	15,214	14,578	14,335	15,087	16,354	8.4%	7.5%
Actual OneTenth Day Headcount	4,587	4,027	3,885	3,735	3,631	3,791	4,084	7.7%	5.1%
Credit Hours Per Student	3.93	3.88	3.92	3.90	3.95	3.98	4.00	0.6%	2.3%

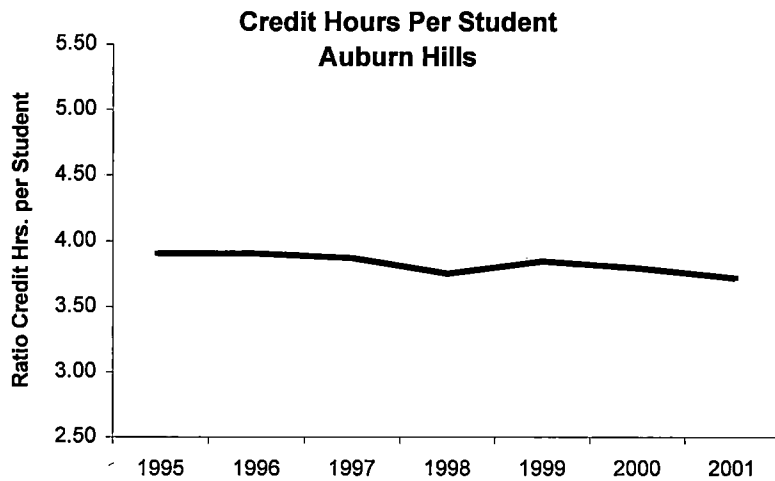


**Summary**

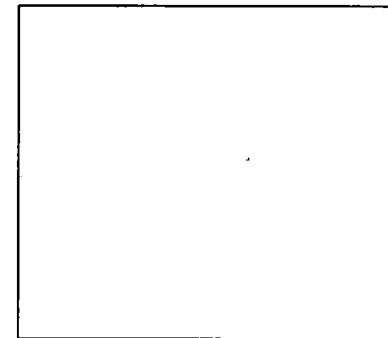


**Oakland Community College  
 Official Enrollment Report  
 One Tenth Day of Session, Summer 2001  
 Auburn Hills - Credit Hours Per Student**

	<u>1995</u>	<u>1996</u>	<u>1997</u>	<u>1998</u>	<u>1999</u>	<u>2000</u>	<u>2001</u>	<u>1 Year % Change</u>	<u>5 Year % Change</u>
Actual OneTenth Day Credit Hrs.	5,355	4,629	4,589	4,262	4,068	3,883	4,348	12.0%	-5.3%
Actual OneTenth Day Headcount	1,372	1,186	1,186	1,136	1,058	1,024	1,169	14.2%	-1.4%
Credit Hours Per Student	3.90	3.90	3.87	3.75	3.84	3.79	3.72	-1.9%	-3.9%

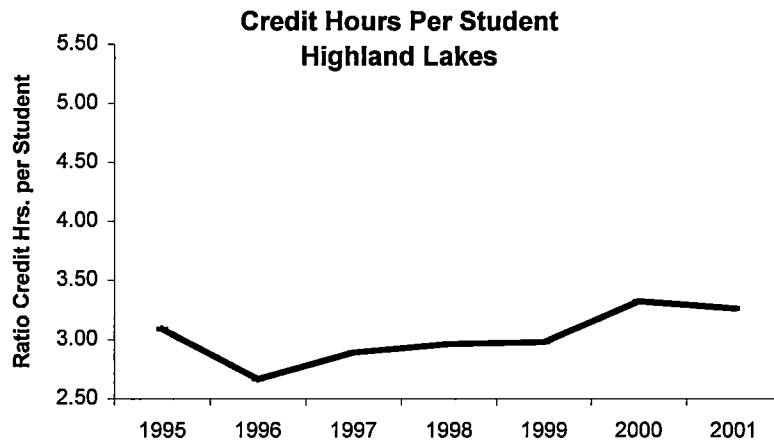


**Summary**

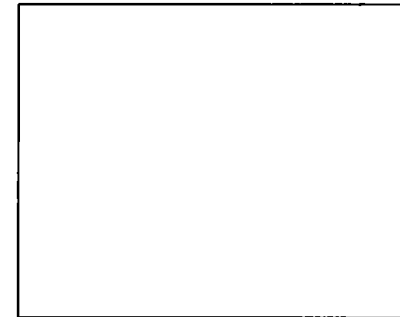


**Oakland Community College  
 Official Enrollment Report  
 One Tenth Day of Session, Summer 2001  
 Highland Lakes - Credit Hours Per Student**

	<u>1995</u>	<u>1996</u>	<u>1997</u>	<u>1998</u>	<u>1999</u>	<u>2000</u>	<u>2001</u>	<u>1 Year % Change</u>	<u>5 Year % Change</u>
Actual OneTenth Day Credit Hrs.	1,590	1,053	1,072	954	968	1,309	1,289	-1.5%	20.2%
Actual OneTenth Day Headcount	515	395	371	322	325	394	395	0.3%	6.5%
Credit Hours Per Student	3.09	2.67	2.89	2.96	2.98	3.32	3.26	-1.8%	12.9%

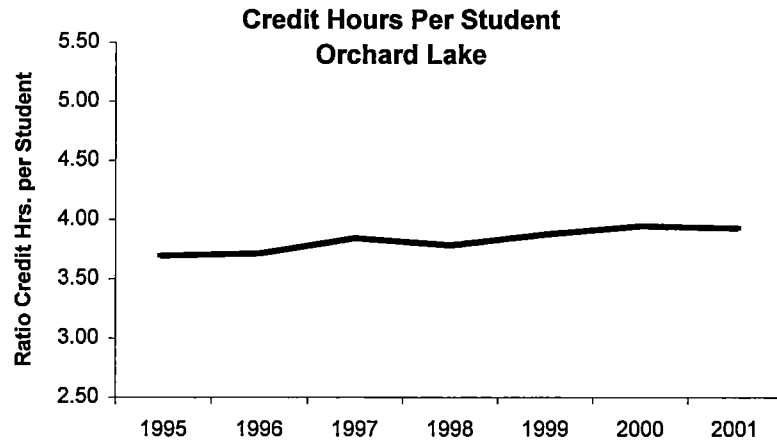


**Summary**

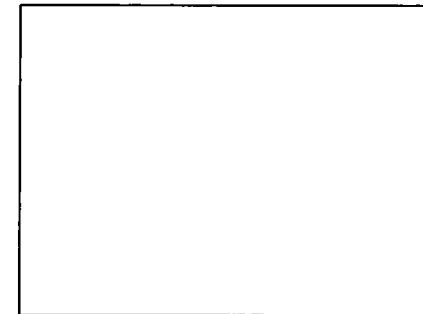


**Oakland Community College  
 Official Enrollment Report  
 One Tenth Day of Session, Summer 2001  
 Orchard Ridge - Credit Hours Per Student**

	<u>1995</u>	<u>1996</u>	<u>1997</u>	<u>1998</u>	<u>1999</u>	<u>2000</u>	<u>2001</u>	<u>1 Year % Change</u>	<u>5 Year % Change</u>
Actual OneTenth Day Credit Hrs.	6,717	5,910	5,672	5,608	5,949	6,111	6,614	8.2%	16.6%
Actual OneTenth Day Headcount	1,818	1,591	1,476	1,482	1,535	1,549	1,683	8.7%	14.0%
Credit Hours Per Student	3.69	3.71	3.84	3.78	3.88	3.95	3.93	-0.4%	2.3%



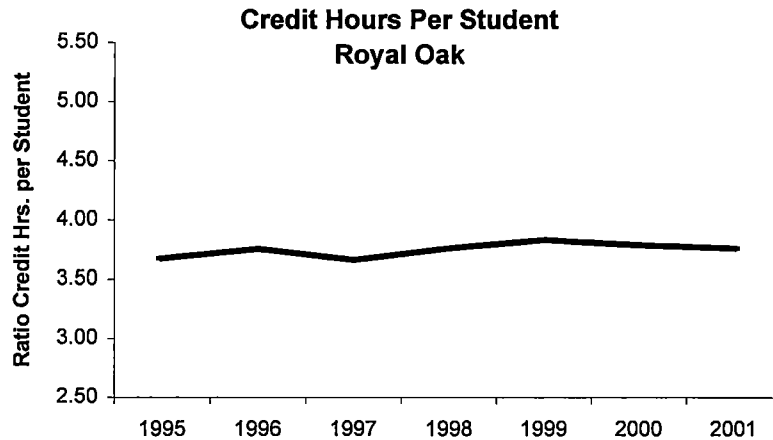
**Summary**



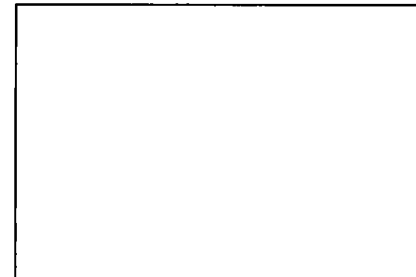


**Oakland Community College  
 Official Enrollment Report  
 One Tenth Day of Session, Summer 2001  
 Royal Oak - Credit Hours Per Student**

	<u>1995</u>	<u>1996</u>	<u>1997</u>	<u>1998</u>	<u>1999</u>	<u>2000</u>	<u>2001</u>	<u>1 Year % Change</u>	<u>5 Year % Change</u>
Actual OneTenth Day Credit Hrs.	3,577	3,519	3,435	3,345	3,077	3,414	3,457	1.3%	0.6%
Actual OneTenth Day Headcount	973	937	938	889	803	901	919	2.0%	-2.0%
Credit Hours Per Student	3.68	3.76	3.66	3.76	3.83	3.79	3.76	-0.7%	2.7%

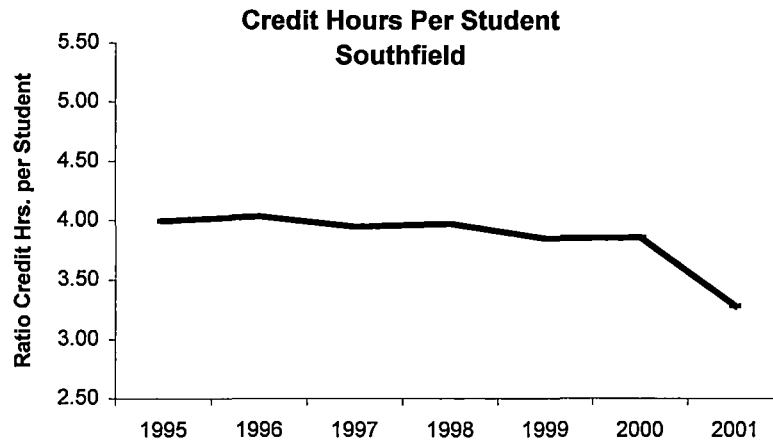


**Summary**



**Oakland Community College  
 Official Enrollment Report  
 One Tenth Day of Session, Summer 2001  
 Southfield - Credit Hours Per Student**

	<u>1995</u>	<u>1996</u>	<u>1997</u>	<u>1998</u>	<u>1999</u>	<u>2000</u>	<u>2001</u>	<b>1 Year % Change</b>	<b>5 Year % Change</b>
Actual OneTenth Day Credit Hrs.	783	500	446	409	273	370	646	74.6%	44.8%
Actual OneTenth Day Headcount	196	124	113	103	71	96	197	105.2%	74.3%
Credit Hours Per Student	3.99	4.03	3.95	3.97	3.85	3.85	3.28	-14.9%	-16.9%



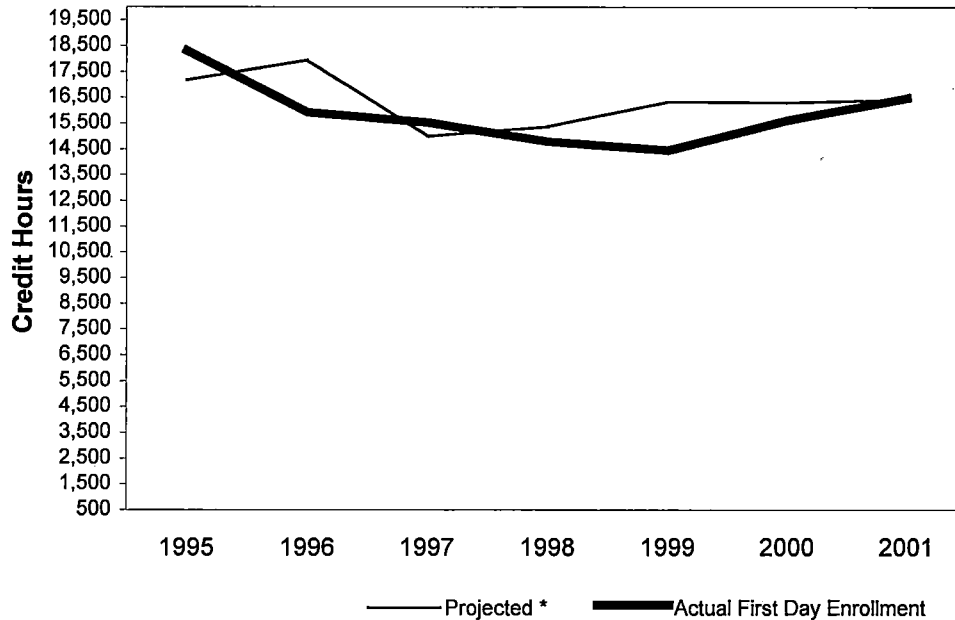
**Summary**



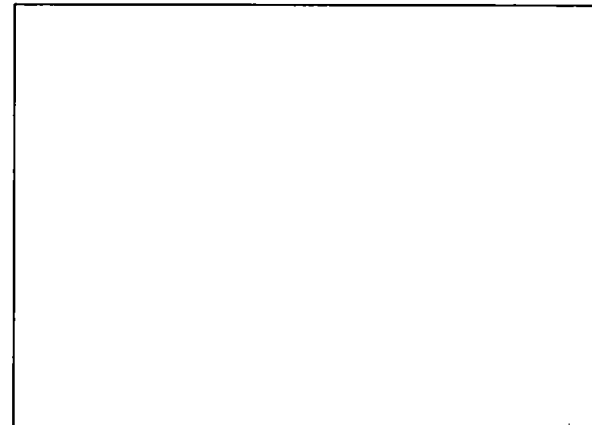
**Oakland Community College  
Official Enrollment Report  
First Day of Session, Summer 2001  
College-wide - Student Credit Hours**

	<u>1995</u>	<u>1996</u>	<u>1997</u>	<u>1998</u>	<u>1999</u>	<u>2000</u>	<u>2001</u>	<u>1 Year % Change</u>	<u>5 Year % Change</u>
<b>Projected *</b>	17,164	17,945	14,990	15,364	16,327	16,296	16,408	0.7%	9.5%
<b>Actual First Day Enrollment</b>	18,306	15,905	15,521	14,779	14,446	15,613	16,466	5.5%	6.1%
<b>% of Projected</b>	106.7%	88.6%	103.5%	96.2%	88.5%	95.8%	100.4%		

**Actual First Day  
Enrollment Compared to Projections  
Summer Term**



**Credit Hour Summary**

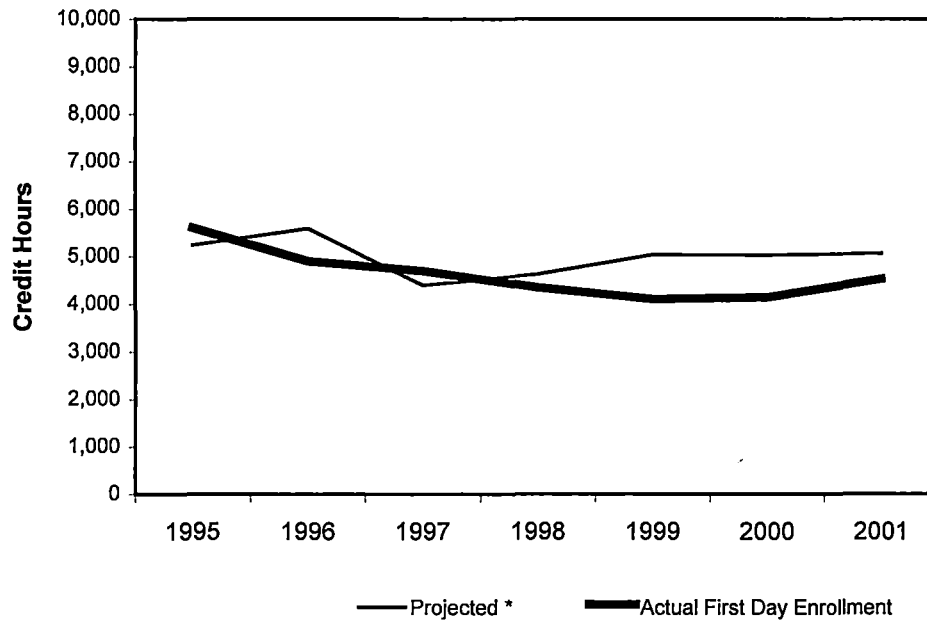


\*Projections include credit, as well as non-credit courses and reflect estimated end of session targets.

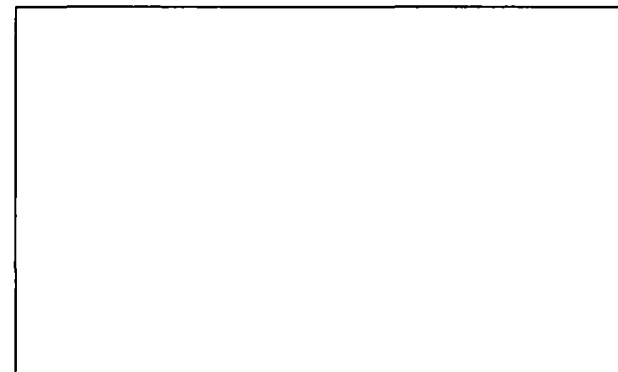
**Oakland Community College  
 Official Enrollment Report  
 First Day of Session, Summer 2001  
 Auburn Hills - Student Credit Hours**

	<u>1995</u>	<u>1996</u>	<u>1997</u>	<u>1998</u>	<u>1999</u>	<u>2000</u>	<u>2001</u>	<u>1 Year % Change</u>	<u>5 Year % Change</u>
<b>Projected *</b>	5,237	5,589	4,401	4,635	5,047	5,037	5,072	0.7%	15.2%
<b>Actual First Day Enrollment</b>	5,603	4,902	4,699	4,354	4,109	4,148	4,535	9.3%	-3.5%
<b>% of Projected</b>	107.0%	87.7%	106.8%	93.9%	81.4%	82.4%	89.4%		

**Actual First Day Enrollment Compared to Projections  
 Auburn Hills  
 Summer Term**



**Credit Hour Summary**

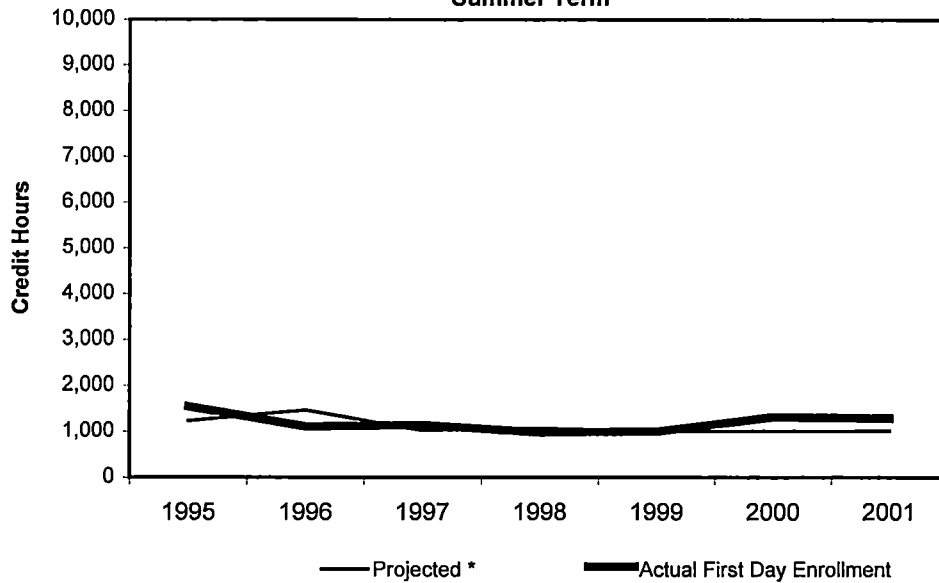


\*Projections include credit, as well as non-credit courses and reflect estimated end of session targets.

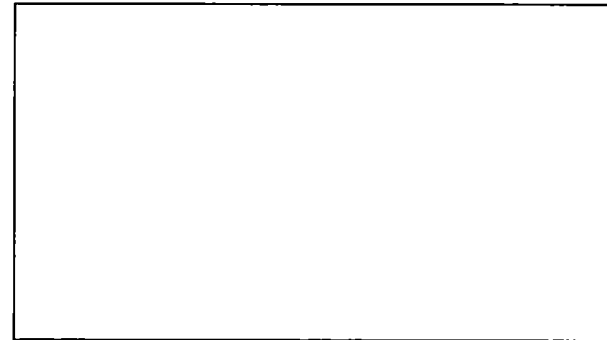
**Oakland Community College  
 Official Enrollment Report  
 First Day of Session, Summer 2001  
 Highland Lakes - Student Credit Hours**

	<u>1995</u>	<u>1996</u>	<u>1997</u>	<u>1998</u>	<u>1999</u>	<u>2000</u>	<u>2001</u>	<u>1 Year % Change</u>	<u>5 Year % Change</u>
Projected *	1,228	1,462	1,023	1,070	1,010	1,008	1,015	0.7%	-0.8%
Actual First Day Enrollment	1,540	1,104	1,140	978	1,000	1,313	1,290	-1.8%	13.2%
% of Projected	125.4%	75.5%	111.4%	91.4%	99.0%	130.3%	127.1%		

**Actual First Day Enrollment Compared to Projections  
 Highland Lakes  
 Summer Term**



**Credit Hour Summary**

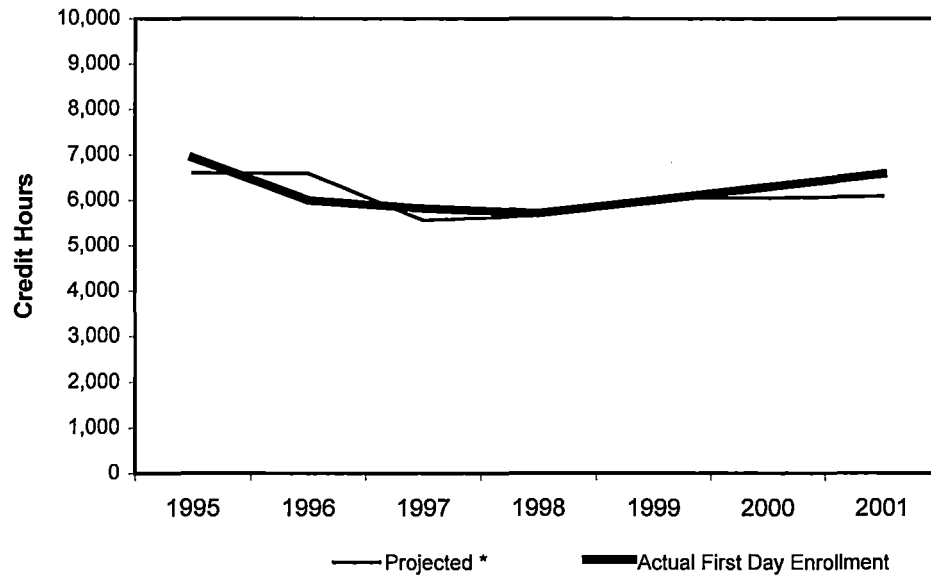


\*Projections include credit, as well as non-credit courses and reflect estimated end of session targets.

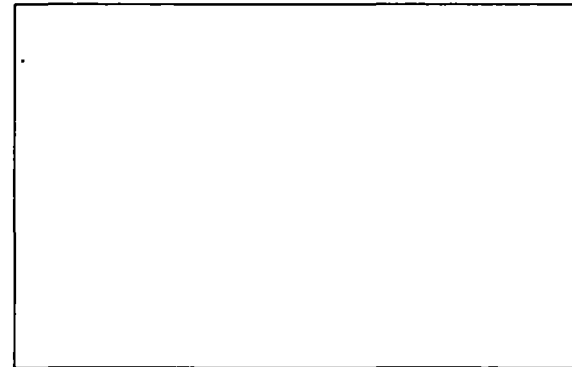
**Oakland Community College  
 Official Enrollment Report  
 First Day of Session, Summer 2001  
 Orchard Ridge - Student Credit Hours**

	<u>1995</u>	<u>1996</u>	<u>1997</u>	<u>1998</u>	<u>1999</u>	<u>2000</u>	<u>2001</u>	<u>1 Year % Change</u>	<u>5 Year % Change</u>
<b>Projected *</b>	6,599	6,585	5,554	5,662	6,056	6,045	6,086	0.7%	9.6%
<b>Actual First Day Enrollment</b>	6,926	5,991	5,816	5,709	5,998	6,288	6,575	4.6%	13.1%
<b>% of Projected</b>	105.0%	91.0%	104.7%	100.8%	99.0%	104.0%	108.0%		

**Actual First Day Enrollment Compared to Projections  
 Orchard Ridge  
 Summer Term**



**Credit Hour Summary**

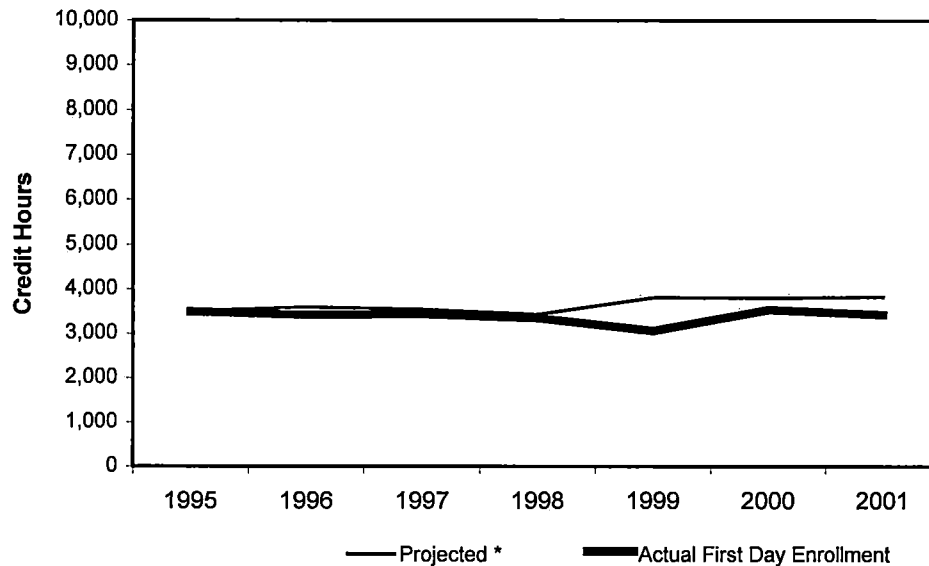


\*Projections include credit, as well as non-credit courses and reflect estimated end of session targets.

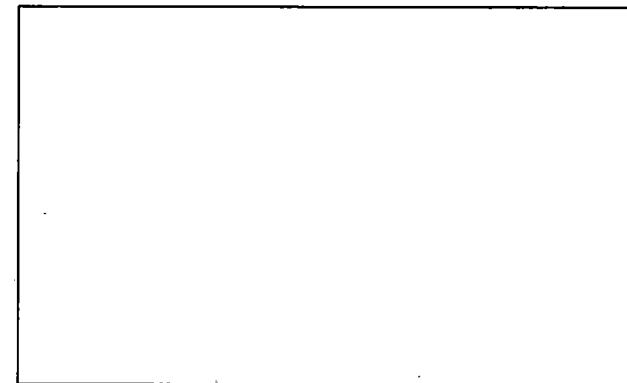
**Oakland Community College  
 Official Enrollment Report  
 First Day of Session, Summer 2001  
 Royal Oak - Student Credit Hours**

	<u>1995</u>	<u>1996</u>	<u>1997</u>	<u>1998</u>	<u>1999</u>	<u>2000</u>	<u>2001</u>	<u>1 Year % Change</u>	<u>5 Year % Change</u>
<b>Projected *</b>	3,500	3,592	3,542	3,429	3,805	3,798	3,824	0.7%	8.0%
<b>Actual First Day Enrollment</b>	3,488	3,420	3,432	3,348	3,055	3,534	3,423	-3.1%	-0.3%
<b>% of Projected</b>	99.7%	95.2%	96.9%	97.6%	80.3%	93.0%	89.5%		

**Actual First Day Enrollment Compared to Projections  
 Royal Oak  
 Summer Term**



**Credit Hour Summary**

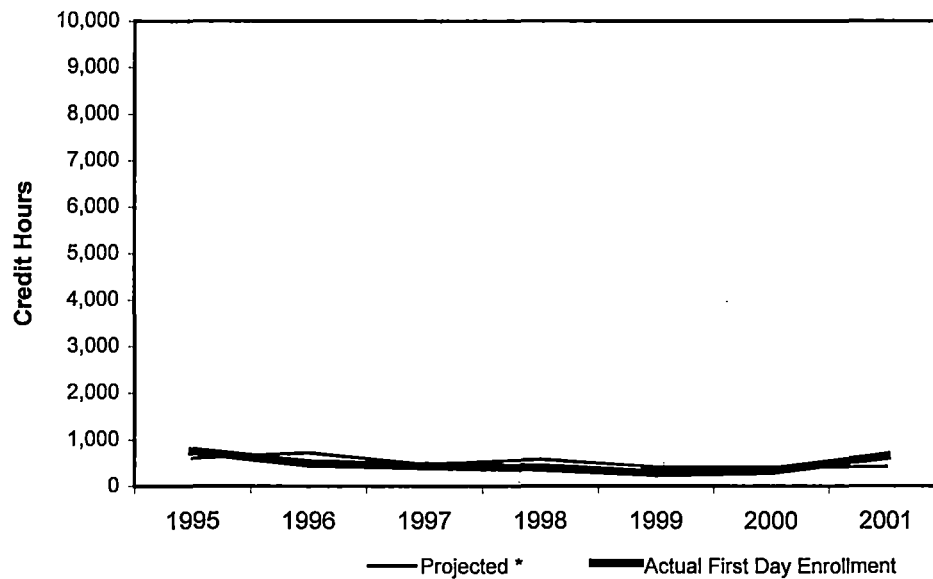


\*Projections include credit, as well as non-credit courses and reflect estimated end of session targets.

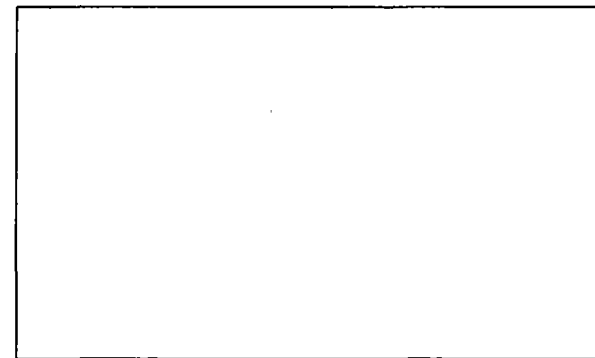
**Oakland Community College  
Official Enrollment Report  
First Day of Session, Summer 2001  
Southfield - Student Credit Hours**

	<u>1995</u>	<u>1996</u>	<u>1997</u>	<u>1998</u>	<u>1999</u>	<u>2000</u>	<u>2001</u>	<u>1 Year % Change</u>	<u>5 Year % Change</u>
<b>Projected *</b>	600	717	470	568	409	408	411	0.7%	-12.6%
<b>Actual First Day Enrollment</b>	749	488	434	390	284	330	643	94.8%	48.2%
<b>% of Projected</b>	124.8%	68.1%	92.3%	68.7%	69.4%	80.9%	156.4%		

**Actual First Day Enrollment Compared to Projections  
Southfield  
Summer Term**



**Credit Hour Summary**



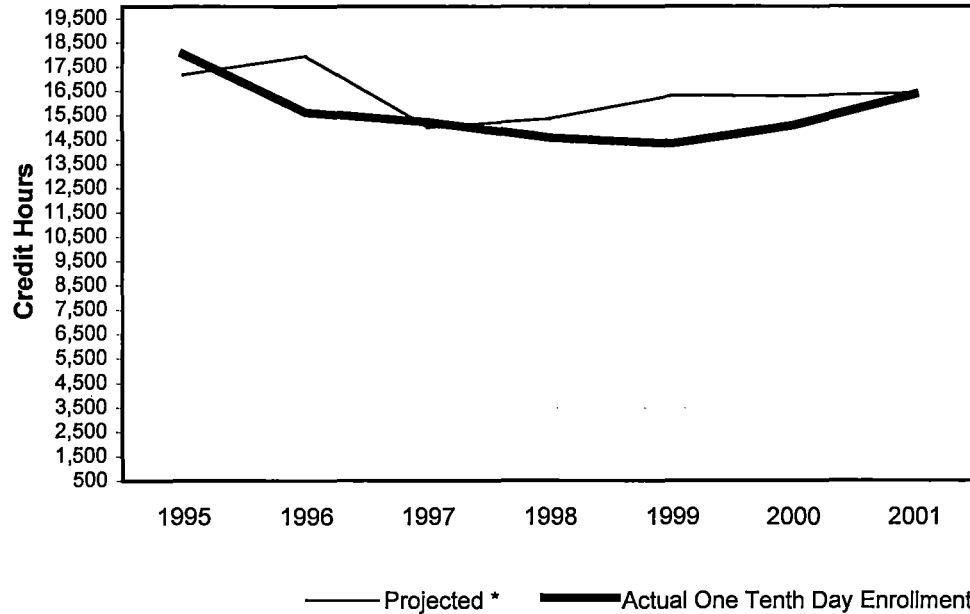
\*Projections include credit, as well as non-credit courses and reflect estimated end of session targets.



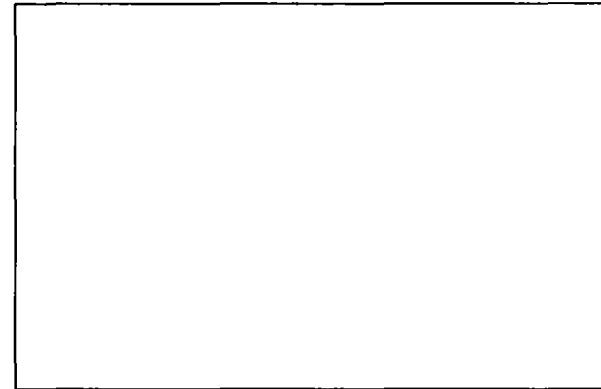
**Oakland Community College  
 Official Enrollment Report  
 One-Tenth Day of Session, Summer 2001  
 College-wide - Student Credit Hours**

	<u>1995</u>	<u>1996</u>	<u>1997</u>	<u>1998</u>	<u>1999</u>	<u>2000</u>	<u>2001</u>	<u>1 Year % Change</u>	<u>5 Year % Change</u>
Projected *	17,164	17,945	14,990	15,364	16,327	16,296	16,408	0.7%	9.5%
Actual One Tenth Day Enrollment	18,022	15,611	15,214	14,578	14,335	15,087	16,354	8.4%	7.5%
% of Projected	105.0%	87.0%	101.5%	94.9%	87.8%	92.6%	99.7%		

**Actual One Tenth Day  
 Enrollment Compared to Projections  
 Summer Term**



**Credit Hour Summary**

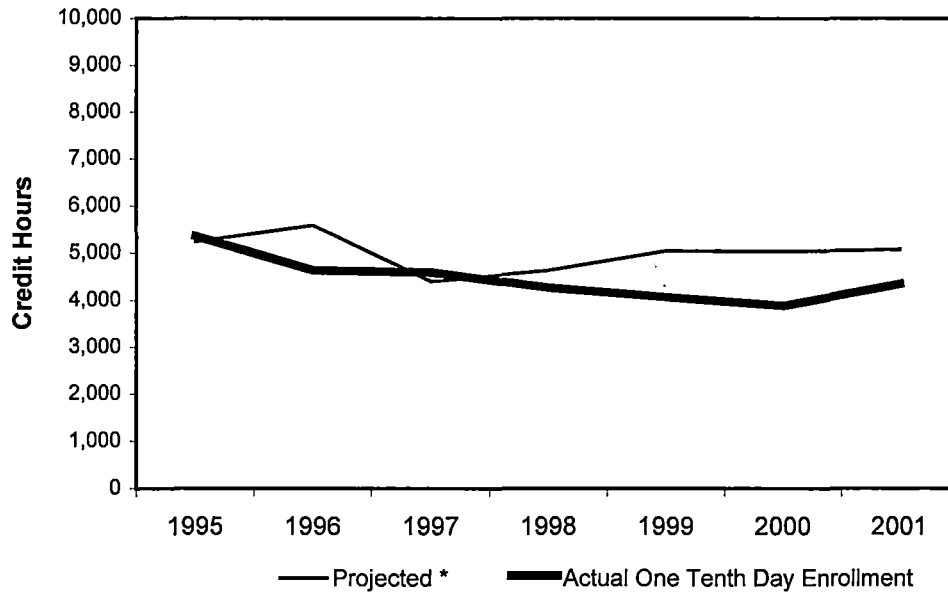


\*Projections include credit, as well as non-credit courses and reflect estimated end of session targets.

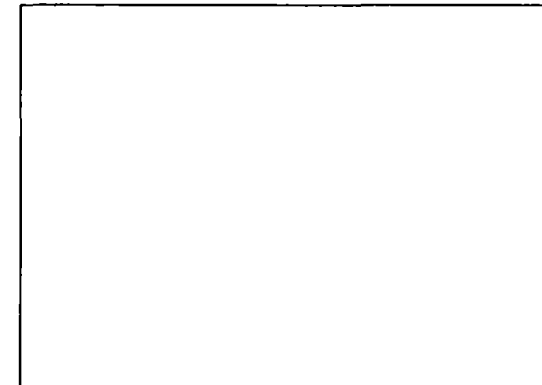
**Oakland Community College  
 Official Enrollment Report  
 One-Tenth Day of Session, Summer 2001  
 Auburn Hills - Student Credit Hours**

	<u>1995</u>	<u>1996</u>	<u>1997</u>	<u>1998</u>	<u>1999</u>	<u>2000</u>	<u>2001</u>	<u>1 Year % Change</u>	<u>5 Year % Change</u>
Projected *	5,237	5,589	4,401	4,635	5,047	5,037	5,072	0.7%	15.2%
Actual One Tenth Day Enrollment	5,355	4,629	4,589	4,262	4,068	3,883	4,348	12.0%	-5.3%
% of Projected	102.3%	82.8%	104.3%	92.0%	80.6%	77.1%	85.7%		

**Actual One Tenth Day Enrollment Compared to Projections  
 Auburn Hills  
 Summer Term**



**Credit Hour Summary**

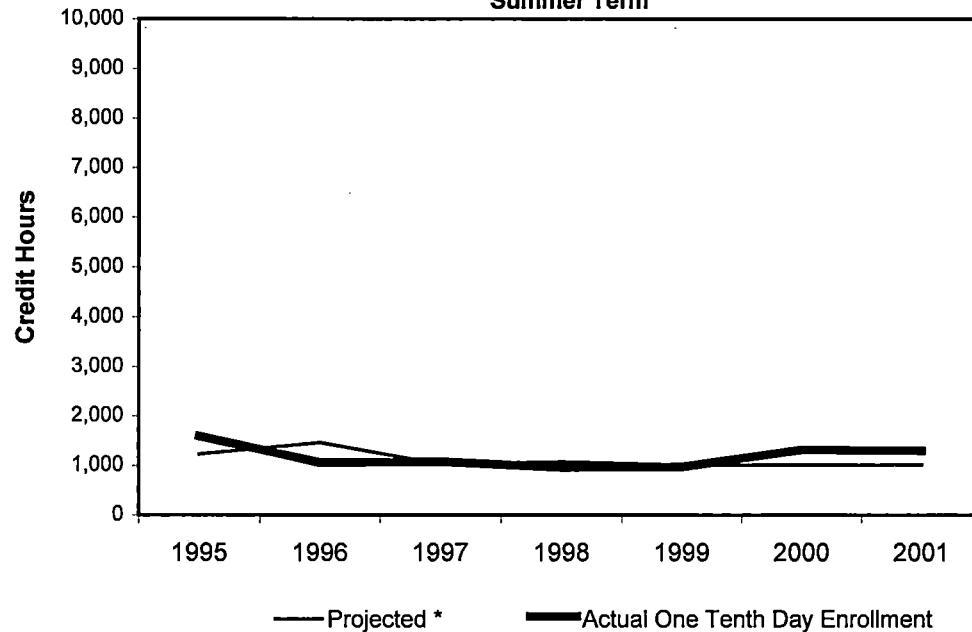


\*Projections include credit, as well as non-credit courses and reflect estimated end of session targets.

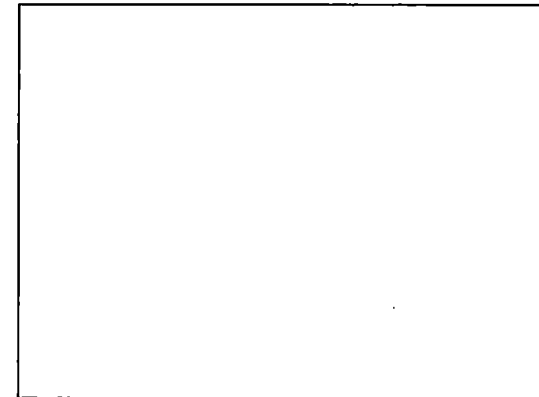
**Oakland Community College  
 Official Enrollment Report  
 One-Tenth Day of Session, Summer 2001  
 Highland Lakes - Student Credit Hours**

	<u>1995</u>	<u>1996</u>	<u>1997</u>	<u>1998</u>	<u>1999</u>	<u>2000</u>	<u>2001</u>	<u>1 Year % Change</u>	<u>5 Year % Change</u>
Projected *	1,228	1,462	1,023	1,070	1,010	1,008	1,015	0.7%	-0.8%
Actual One Tenth Day Enrollment	1,590	1,053	1,072	954	968	1,309	1,289	-1.5%	20.2%
% of Projected	129.5%	72.0%	104.8%	89.2%	95.8%	129.9%	127.0%		

**Actual One Tenth Day Enrollment Compared to Projections  
 Highland Lakes  
 Summer Term**



**Credit Hour Summary**

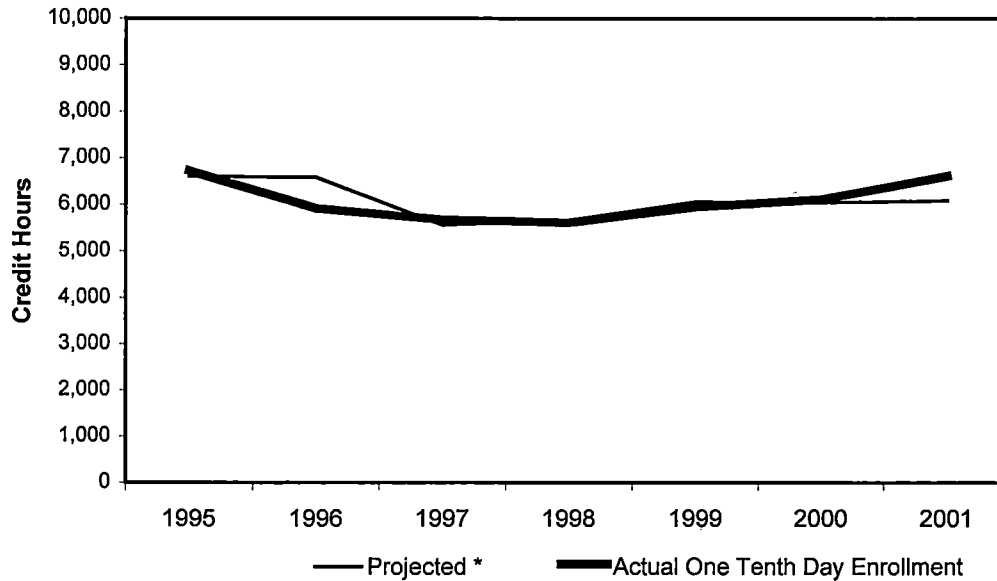


\*Projections include credit, as well as non-credit courses and reflect estimated end of session targets.

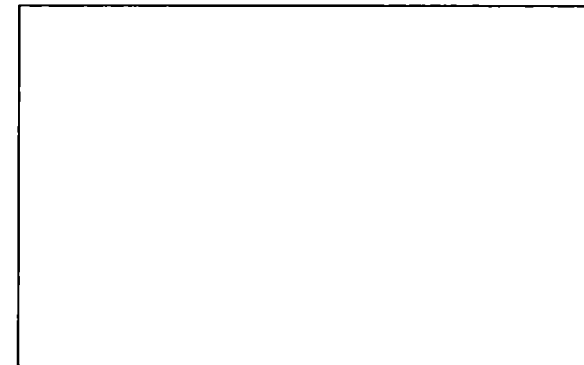
**Oakland Community College  
 Official Enrollment Report  
 One-Tenth Day of Session, Summer 2001  
 Orchard Ridge - Student Credit Hours**

	<u>1995</u>	<u>1996</u>	<u>1997</u>	<u>1998</u>	<u>1999</u>	<u>2000</u>	<u>2001</u>	<u>1 Year % Change</u>	<u>5 Year % Change</u>
Projected *	6,599	6,585	5,554	5,662	6,056	6,045	6,086	0.7%	9.6%
Actual One Tenth Day Enrollment	6,717	5,910	5,672	5,608	5,949	6,111	6,614	8.2%	16.6%
% of Projected	101.8%	89.7%	102.1%	99.0%	98.2%	101.1%	108.7%		

**Actual One Tenth Day Enrollment Compared to Projections  
 Orchard Ridge  
 Summer Term**



**Credit Hour Summary**

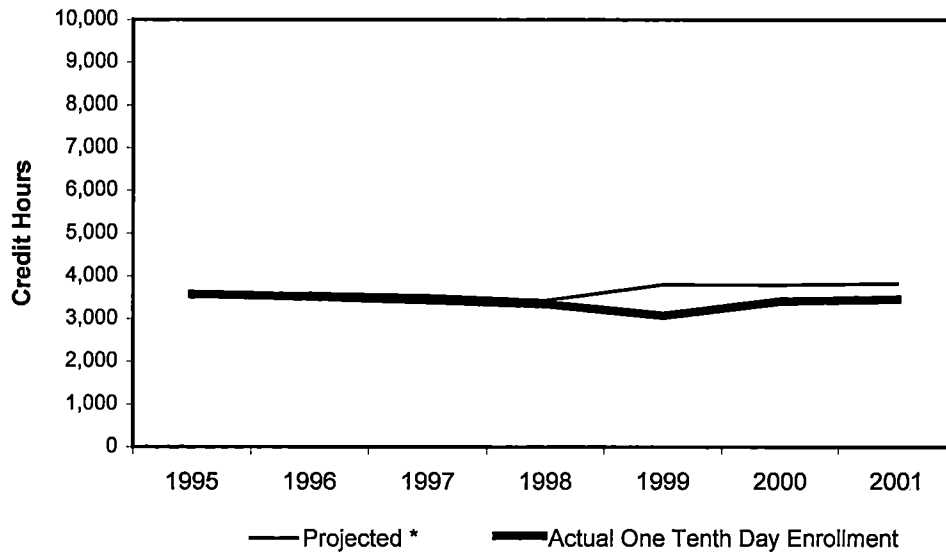


\*Projections include credit, as well as non-credit courses and reflect estimated end of session targets.

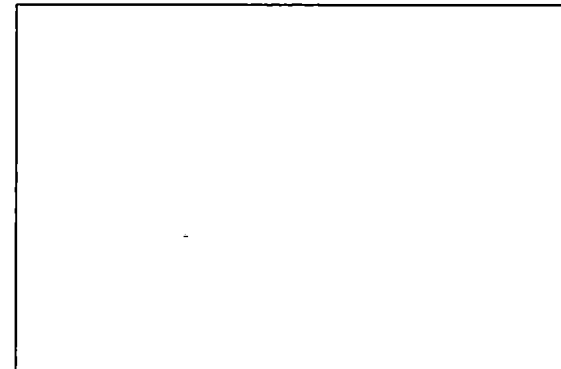
**Oakland Community College  
 Official Enrollment Report  
 One-Tenth Day of Session, Summer 2001  
 Royal Oak - Student Credit Hours**

	<u>1995</u>	<u>1996</u>	<u>1997</u>	<u>1998</u>	<u>1999</u>	<u>2000</u>	<u>2001</u>	<u>1 Year % Change</u>	<u>5 Year % Change</u>
Projected *	3,500	3,592	3,542	3,429	3,805	3,798	3,824	0.7%	8.0%
Actual One Tenth Day Enrollment	3,577	3,519	3,435	3,345	3,077	3,414	3,457	1.3%	0.6%
% of Projected	102.2%	98.0%	97.0%	97.6%	80.9%	89.9%	90.4%		

**Actual One Tenth Day Enrollment Compared to Projections  
 Royal Oak  
 SummerTerm**



**Credit Hour Summary**

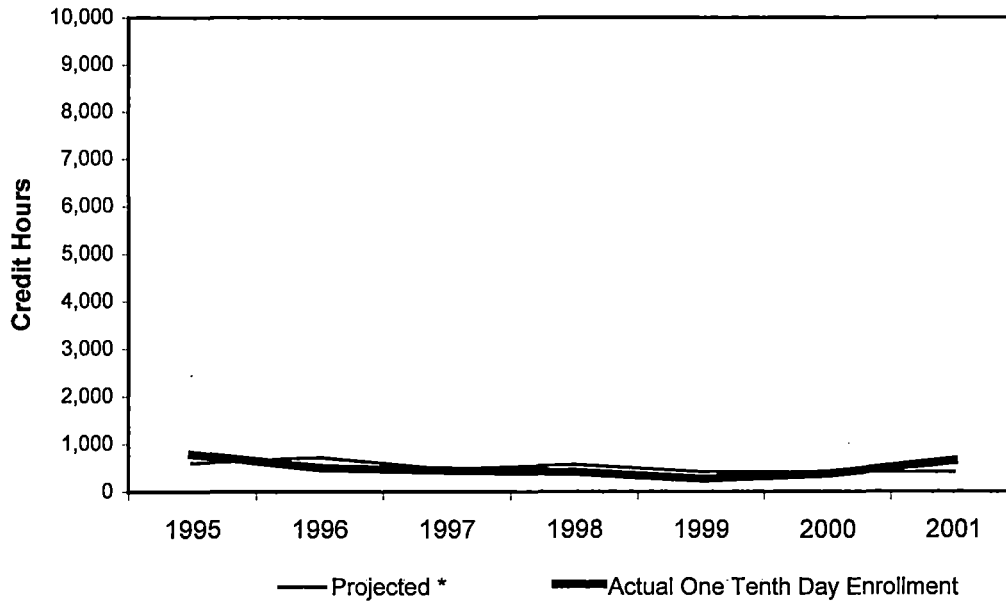


\*Projections include credit, as well as non-credit courses and reflect estimated end of session targets.

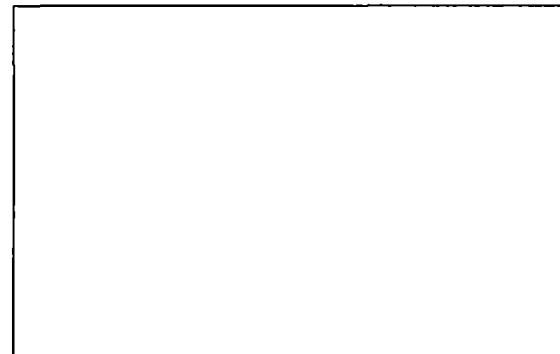
**Oakland Community College  
 Official Enrollment Report  
 One-Tenth Day of Session, Summer 2001  
 Southfield - Student Credit Hours**

	<u>1995</u>	<u>1996</u>	<u>1997</u>	<u>1998</u>	<u>1999</u>	<u>2000</u>	<u>2001</u>	<u>1 Year % Change</u>	<u>5 Year % Change</u>
Projected *	600	717	470	568	409	408	411	0.7%	0.7%
Actual One Tenth Day Enrollment	783	500	446	409	273	370	646	74.6%	44.8%
% of Projected	130.5%	69.7%	94.9%	72.0%	66.7%	90.7%	157.2%		

**Actual One Tenth Day Enrollment Compared to Projections  
 Southfield  
 Summer Term**



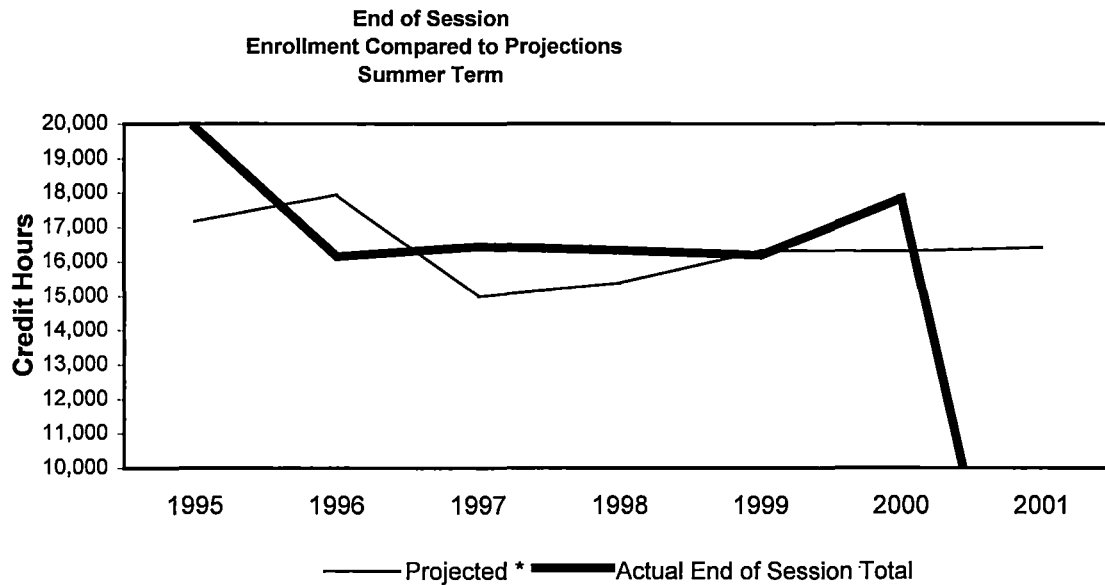
**Credit Hour Summary**



\*Projections include credit, as well as non-credit courses and reflect estimated end of session targets.

**Oakland Community College  
Official Enrollment Report  
End of Session, Summer 2001  
College-wide - Student Credit Hours**

	<u>1995</u>	<u>1996</u>	<u>1997</u>	<u>1998</u>	<u>1999</u>	<u>2000</u>	<u>2001</u>	<u>1 Year % Change</u>	<u>5 Year % Change</u>
<b>Projected*</b>	17,164	17,945	14,990	15,364	16,327	16,296	16,408		
<b>Actual End of Session Total</b>	19,902	16,151	16,430	16,327	16,188	17,830	0		
<b>% of Projected</b>	116%	90%	110%	106%	99%	109%	0%		
<b>Actual End of Session (Credit)</b>	17,769	15,951	15,390	15,323	14,435	15,261	0		
<b>Actual End of Session (Non Credit)</b>	2,133	200	1,040	1,004	1,753	2,569	0		

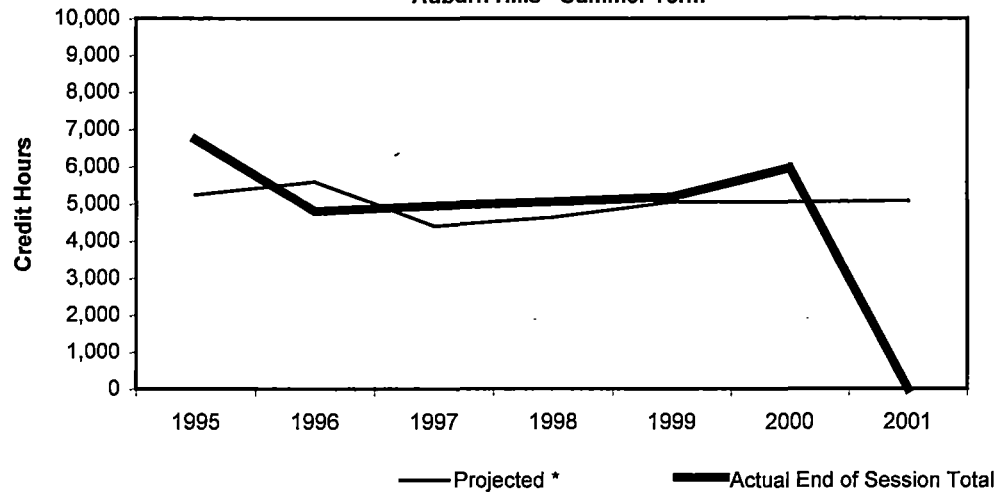


\*Projections include credit, as well as non-credit courses and reflect estimated end of session targets.

**Oakland Community College  
Official Enrollment Report  
End of Session, Summer 2001  
Auburn Hills - Student Credit Hours**

	<u>1995</u>	<u>1996</u>	<u>1997</u>	<u>1998</u>	<u>1999</u>	<u>2000</u>	<u>2001</u>	<u>1 Year % Change</u>	<u>5 Year % Change</u>
<b>Projected *</b>	5,237	5,589	4,401	4,635	5,047	5,037	5,072	0.7%	15.2%
<b>Actual End of Session Total</b>	6,725	4,793	4,941	5,047	5,175	5,962	0	-100.0%	-100.0%
<b>% of Projected</b>	128.4%	85.8%	112.3%	108.9%	102.5%	118.4%	0.0%		
<b>Actual End of Session (Credit)</b>	5,534	4,683	4,643	4,559	4,168	4,042	0		
<b>Actual End of Session (Non Credit)</b>	1,191	110	298	488	1,007	1,920	0		

**Actual End of Session Enrollment  
Compared to Projections  
Auburn Hills - Summer Term**



**Summary**

Credit hours, as of the One Tenth Day Spring 2001 session, are at 82% of projections.

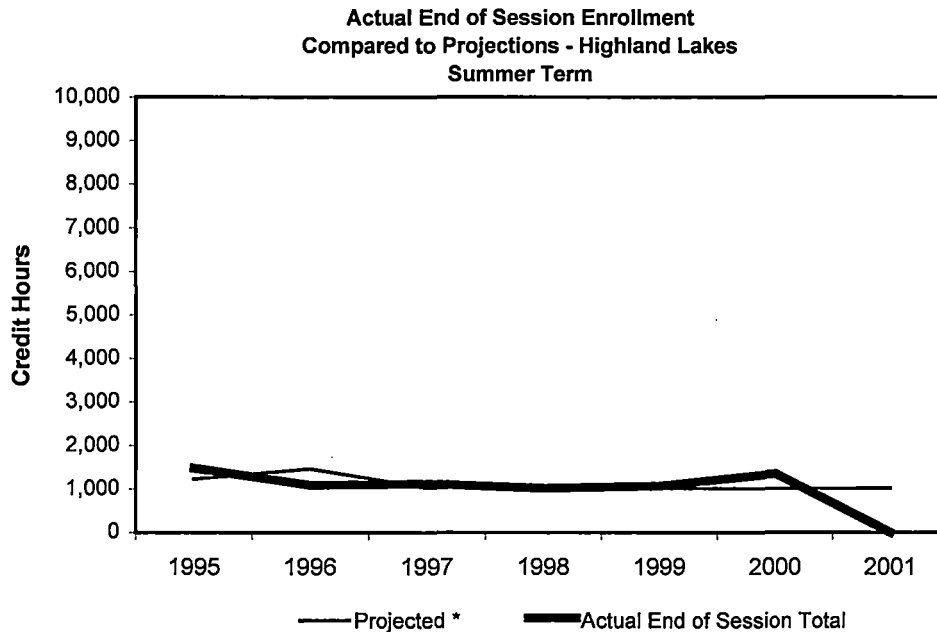
In comparison to the One Tenth

\*Projections include credit, as well as non-credit courses and reflect estimated end of session targets.



**Oakland Community College  
 Official Enrollment Report  
 End of Session, Summer 2001  
 Highland Lakes - Student Credit Hours**

	<u>1995</u>	<u>1996</u>	<u>1997</u>	<u>1998</u>	<u>1999</u>	<u>2000</u>	<u>2001</u>	<u>1 Year % Change</u>	<u>5 Year % Change</u>
<b>Projected*</b>	1,228	1,462	1,023	1,070	1,010	1,008	1,015		
<b>Actual End of Session Total</b>	1,473	1,090	1,113	1,010	1,061	1,349	0		
<b>% of Projected</b>	120.0%	74.6%	108.8%	94.4%	105.0%	133.8%	0.0%		
<b>Actual End of Session (Credit)</b>	1,448	1,089	1,072	972	968	1,331	0		
<b>Actual End of Session (Non Credit)</b>	25	1	41	38	93	18	0		

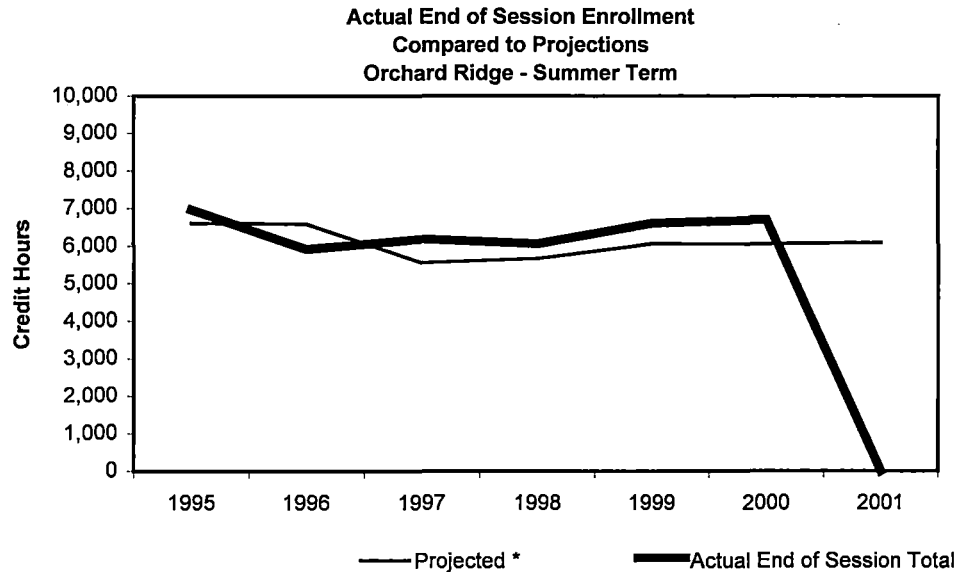


Credit hours, as of the One Tenth Day of the Spring 2001 session, are at 110% of projections.

\*Projections include credit, as well as non-credit courses and reflect estimated end of session targets.

**Oakland Community College  
Official Enrollment Report  
End of Session, Summer 2001  
Orchard Ridge - Student Credit Hours**

	<u>1995</u>	<u>1996</u>	<u>1997</u>	<u>1998</u>	<u>1999</u>	<u>2000</u>	<u>2001</u>	<u>1 Year % Change</u>	<u>5 Year % Change</u>
<b>Projected*</b>	6,599	6,585	5,554	5,662	6,056	6,045	6,086	0.7%	9.6%
<b>Actual End of Session Total</b>	6,960	5,910	6,181	6,056	6,602	6,691	0	-100.0%	-100.0%
<b>% of Projected</b>	105.5%	89.7%	111.3%	107.0%	109.0%	110.7%	0.0%		
<b>Actual End of Session (Credit)</b>	6,520	5,910	5,672	5,608	5,949	6,060	0		
<b>Actual End of Session (Non Credit)</b>	440	0	509	448	653	631	0		



**Summary**

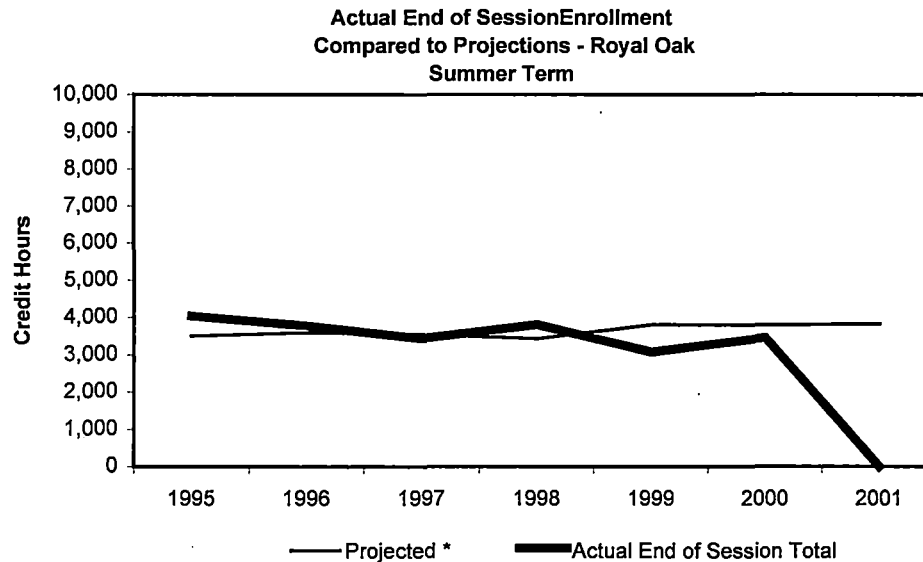
Credit hours, as of the One Tenth Day Spring 2001 session, are at 82% of projections.

In comparison to the One Tenth

\*Projections include credit, as well as non-credit courses and reflect estimated end of session targets.

**Oakland Community College  
Official Enrollment Report  
End of Session, Summer 2001  
Royal Oak - Student Credit Hours**

	<u>1995</u>	<u>1996</u>	<u>1997</u>	<u>1998</u>	<u>1999</u>	<u>2000</u>	<u>2001</u>	<u>1 Year % Change</u>	<u>5 Year % Change</u>
<b>Projected*</b>	3,500	3,592	3,542	3,429	3,805	3,798	3,824		
<b>Actual End of Session Total</b>	4,033	3,770	3,435	3,805	3,077	3,458	0		
<b>% of Projected</b>	115.2%	105.0%	97.0%	111.0%	80.9%	91.0%	0.0%		
<b>Actual End of Session (Credit)</b>	3,556	3,769	3,434	3,775	3,077	3,458	0		
<b>Actual End of Session (Non Credit)</b>	477	1	1	30	0	0	0		

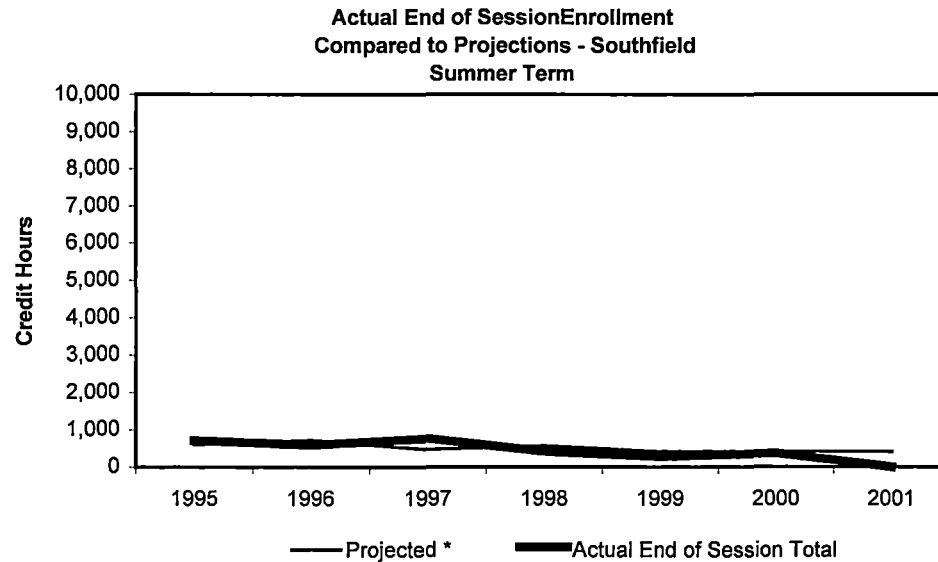


Credit hours, as of the One Tenth Day of the Spring 2001 session, are at 110% of projections.

\*Projections include credit, as well as non-credit courses and reflect estimated end of session targets.

**Oakland Community College  
Official Enrollment Report  
End of Session, Summer 2001  
Southfield - Student Credit Hours**

	<u>1995</u>	<u>1996</u>	<u>1997</u>	<u>1998</u>	<u>1999</u>	<u>2000</u>	<u>2001</u>	<u>1 Year % Change</u>	<u>5 Year % Change</u>
<b>Projected*</b>	600	717	470	568	409	408	411		
<b>Actual End of Session Total</b>	711	588	760	409	273	370	0		
<b>% of Projected</b>	118.5%	82.0%	161.7%	72.0%	66.7%	90.7%	0.0%		
<b>Actual End of Session (Credit)</b>	711	500	569	409	273	370	0		
<b>Actual End of Session (Non Credit)</b>	0	88	191	0	0	0	0		

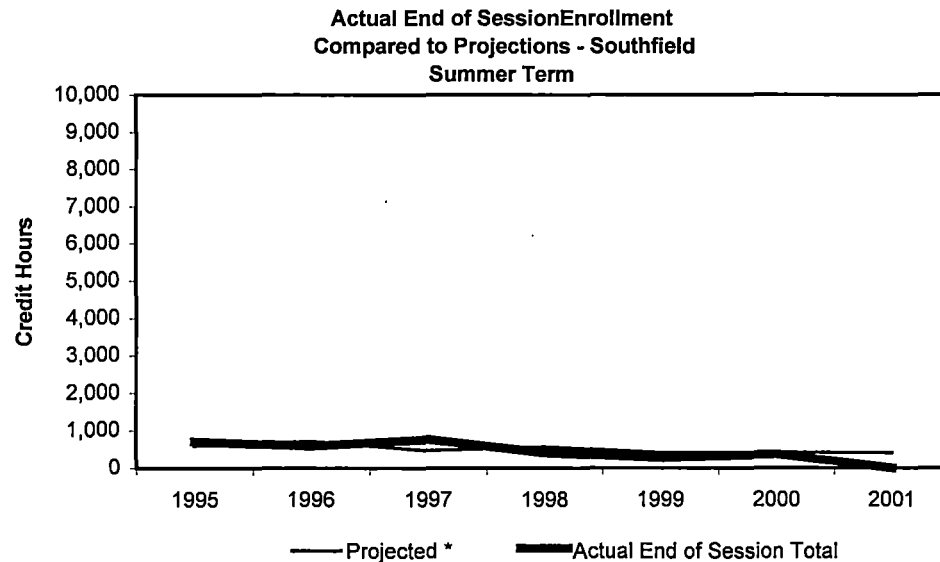


Credit hours, as of the One Tenth Day of the Spring 2001 session, are at 110% of projections.

\*Projections include credit, as well as non-credit courses and reflect estimated end of session targets.

**Oakland Community College  
Official Enrollment Report  
End of Session, Summer 2001  
Southfield - Student Credit Hours**

	<u>1995</u>	<u>1996</u>	<u>1997</u>	<u>1998</u>	<u>1999</u>	<u>2000</u>	<u>2001</u>	<u>1 Year % Change</u>	<u>5 Year % Change</u>
<b>Projected*</b>	600	717	470	568	409	408	411		
<b>Actual End of Session Total</b>	711	588	760	409	273	370	0		
<b>% of Projected</b>	118.5%	82.0%	161.7%	72.0%	66.7%	90.7%	0.0%		
<b>Actual End of Session (Credit)</b>	711	500	569	409	273	370	0		
<b>Actual End of Session (Non Credit)</b>	0	88	191	0	0	0	0		



Credit hours, as of the One Tenth Day of the Spring 2001 session, are at 110% of projections.

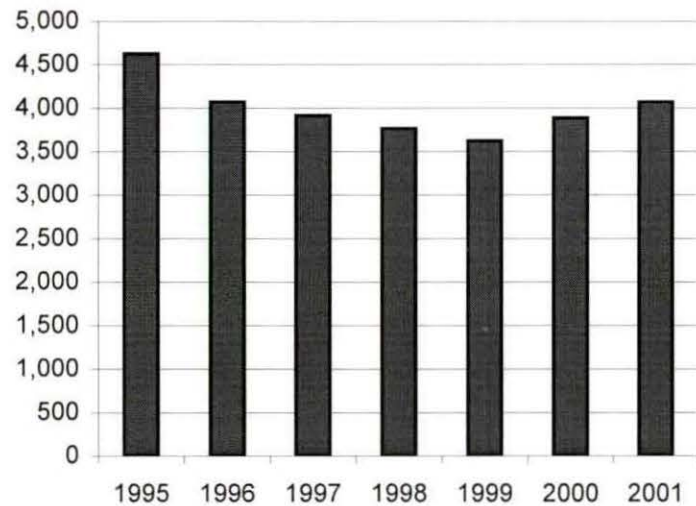
\*Projections include credit, as well as non-credit courses and reflect estimated end of session targets.

**Oakland Community College  
Official Enrollment Report  
First Day of Session, Summer 2001  
College-wide - Student Head Count**

	<u>1995</u>	<u>1996</u>	<u>1997</u>	<u>1998</u>	<u>1999</u>	<u>2000</u>	<u>2001</u>	<u>1 Year % Change</u>	<u>5 Year % Change</u>
<b>Projected Headcount</b>	4,454	4,652	2,451	5,000	5,047	5,037	5,300		
<b>Actual First Day Enrollment</b>	4,624	4,072	3,917	3,764	3,621	3,886	4,070	4.7%	3.9%
<b>% of Projected</b>	103.8%	87.5%	159.8%	75.3%	71.7%	77.1%	76.8%		

*ACT  
PRO*

**Actual First Day Student Headcount - Collegewide  
Summer Term**



*19 lines  
↑  
↓*

**Headcount Summary**

Student headcount college-wide, as of the first day of session, Summer 2001 is at 4,070, up 4.7% from Summer 2000 and 76.8% of projected headcount.

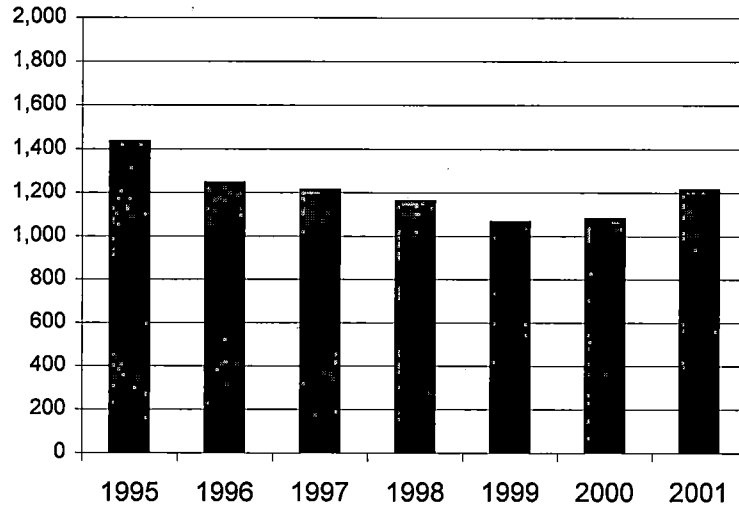
The five year change shows is up 3.9% from 1997.

*↑  
10  
↓*

**Oakland Community College  
 Official Enrollment Report  
 First Day of Session, Summer 2001  
 Auburn Hills - Student Head Count**

	<u>1995</u>	<u>1996</u>	<u>1997</u>	<u>1998</u>	<u>1999</u>	<u>2000</u>	<u>2001</u>	<u>1 Year % Change</u>	<u>5 Year % Change</u>
<b>Actual First Day Enrollment</b>	1,430	1,242	1,208	1,158	1,062	1,076	1,209	12.4%	0.1%

**Actual First Day Student Headcount - Auburn Hills  
 Summer Term**



**Headcount Summary**

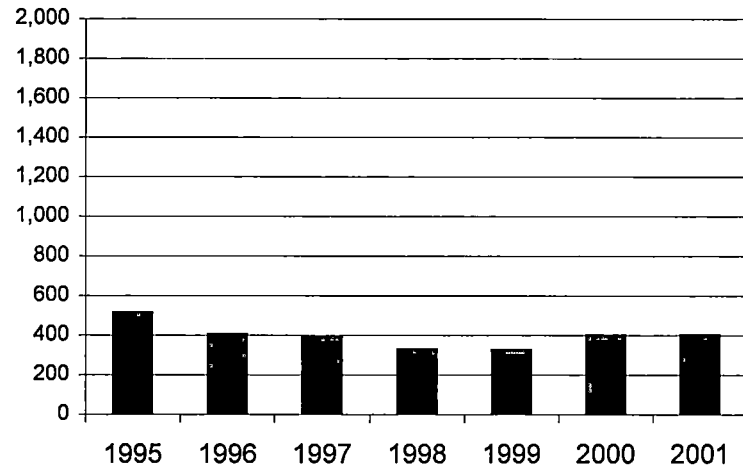
Student headcount as of the first day of the Summer 2001 registration is at 1,209, up 12.4% from Summer 2000.

The five year change shows is even from 1997 showing no change.

**Oakland Community College  
 Official Enrollment Report  
 First Day of Session, Summer 2001  
 Highland Lakes - Student Head Count**

	<u>1995</u>	<u>1996</u>	<u>1997</u>	<u>1998</u>	<u>1999</u>	<u>2000</u>	<u>2001</u>	<u>1 Year % Change</u>	<u>5 Year % Change</u>
<b>Actual First Day Enrollment</b>	510	403	390	327	323	398	399	0.3%	2.3%

**Actual First Day Student Headcount -  
 Highland Lakes  
 Summer Term**



**Headcount Summary**

Student headcount as of the first day of the Summer 2001 registration is at 399 with no change from the 398 in 2000.

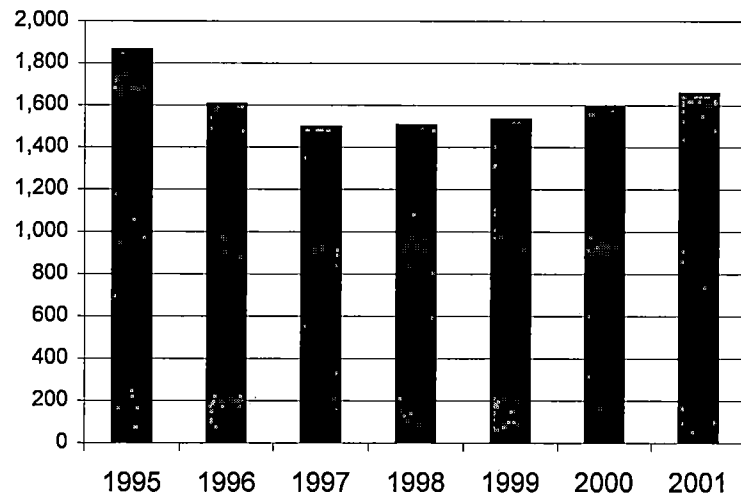
The five year change shows is up 2.3% from 1997.



**Oakland Community College  
 Official Enrollment Report  
 First Day of Session, Summer 2001  
 Orchard Ridge - Student Head Count**

	<u>1995</u>	<u>1996</u>	<u>1997</u>	<u>1998</u>	<u>1999</u>	<u>2000</u>	<u>2001</u>	<u>1 Year % Change</u>	<u>5 Year % Change</u>
<b>Actual First Day Enrollment</b>	1,861	1,603	1,493	1,502	1,530	1,586	1,655	4.4%	10.9%

**Actual First Day Student Headcount -  
 Orchard Ridge  
 Summer Term**



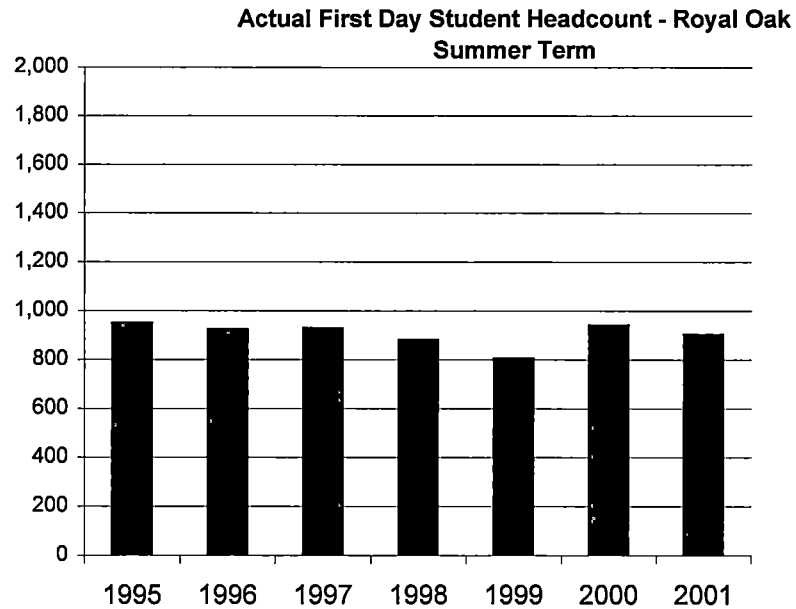
**Headcount Summary**

Student headcount as of the first day of the Summer 2001 registration is at 1,655, up 4.4% from Summer 2000.

The five year change is up 10.9% from 1997.

**Oakland Community College  
 Official Enrollment Report  
 First Day of Session, Summer 2001  
 Royal Oak - Student Head Count**

	<u>1995</u>	<u>1996</u>	<u>1997</u>	<u>1998</u>	<u>1999</u>	<u>2000</u>	<u>2001</u>	<u>Change</u>	<u>Change</u>
<b>Actual First Day Enrollment</b>	947	922	927	878	802	939	900	-4.2%	-2.9%



**Headcount Summary**

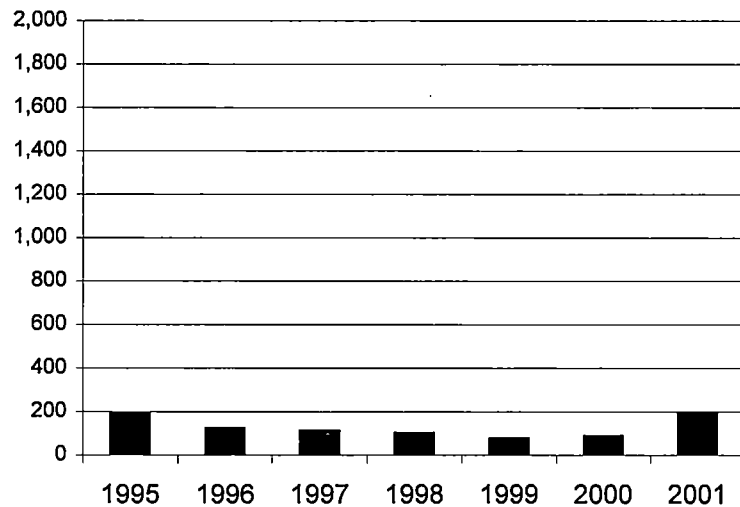
Student headcount as of the first day of the Summer 2001 registration is at 900, down 4.2% from Summer 2000.

The five year change shows is down 2.9% from 1997.

**Oakland Community College  
 Official Enrollment Report  
 First Day of Session, Summer 2001  
 Southfield - Student Head Count**

	<u>1995</u>	<u>1996</u>	<u>1997</u>	<u>1998</u>	<u>1999</u>	<u>2000</u>	<u>2001</u>	<u>Change</u>	<u>Change</u>
<b>Actual First Day Enrollment</b>	189	121	109	98	74	86	193	124.4%	77.1%

**Actual First Day Student Headcount - Southfield  
 Summer Term**



**Summary**

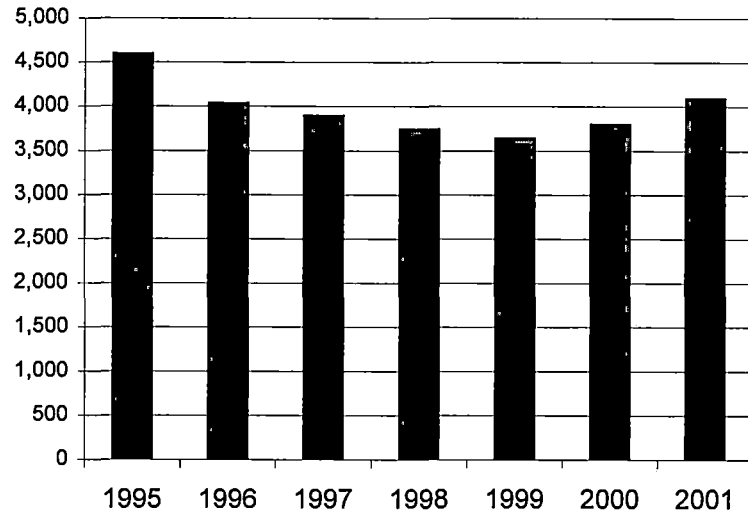
Student headcount, as of the first day of the Spring 2001 registration is at 55, a decrease of 36% from 2000.

The five year change shows a 50% decrease from 1997.

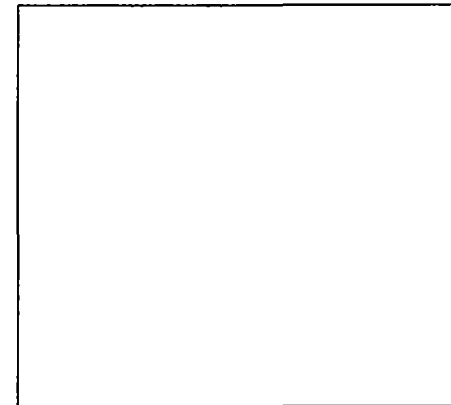
**Oakland Community College  
Official Enrollment Report  
One Tenth Day of Enrollment, Summer 2001  
College-wide - Student Head Count**

	<u>1995</u>	<u>1996</u>	<u>1997</u>	<u>1998</u>	<u>1999</u>	<u>2000</u>	<u>2001</u>	<u>1 Year % Change</u>	<u>5 Year % Change</u>
<b>Projected Headcount</b>	4,454	4,652	2,451	5,000	5,047	5,037	5,300		
<b>Actual One Tenth Day Enrollment</b>	4,587	4,027	3,885	3,735	3,631	3,791	4,084	7.7%	5.1%
<b>% of Projected</b>	103.0%	86.6%	158.5%	74.7%	71.9%	75.3%	77.1%		

**Actual One Tenth Day Student Headcount  
Collegewide  
Summer Term**



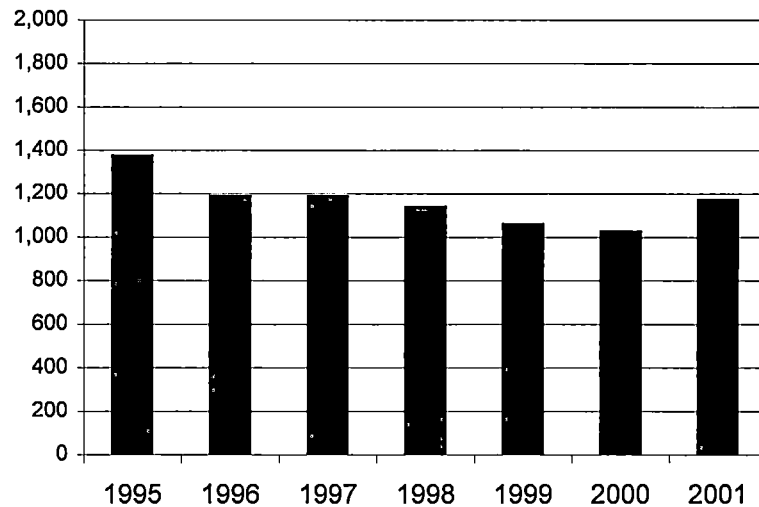
**Student Headcount Summary**



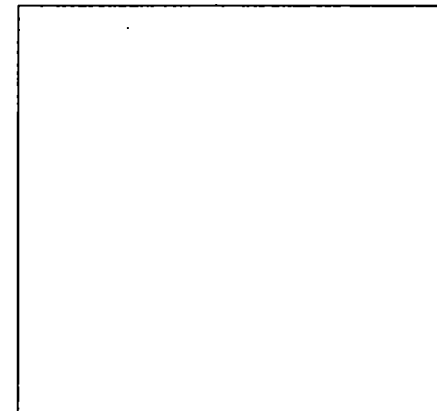
**Oakland Community College  
 Official Enrollment Report  
 One Tenth Day of Enrollment, Summer 2001  
 Auburn Hills - Student Head Count**

	<u>1995</u>	<u>1996</u>	<u>1997</u>	<u>1998</u>	<u>1999</u>	<u>2000</u>	<u>2001</u>	<u>1 Year % Change</u>	<u>5 Year % Change</u>
<b>Actual One Tenth Day Enrollment</b>	1,372	1,186	1,186	1,136	1,058	1,024	1,169	14.2%	-1.4%

**Actual One-Tenth Day Student Headcount  
 Southfield  
 Summer Term**



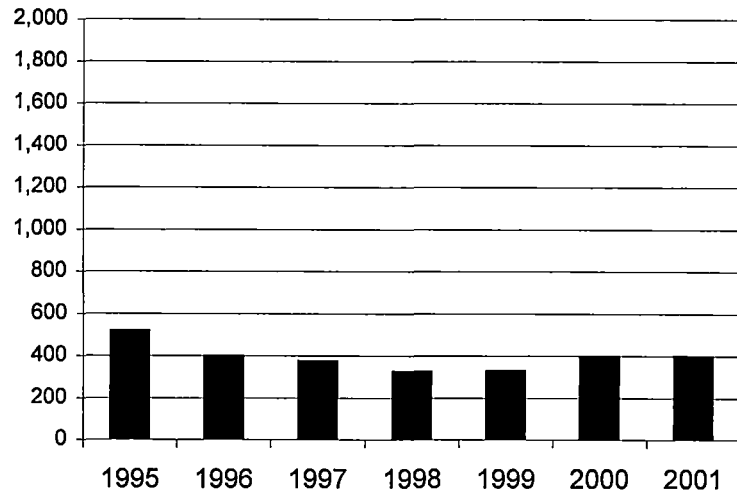
**Student Headcount Summary**



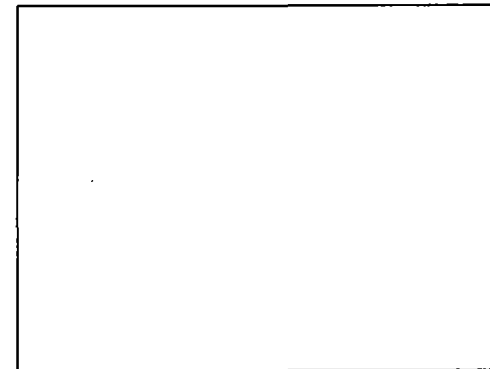
**Oakland Community College  
 Official Enrollment Report  
 One Tenth Day of Enrollment, Summer 2001  
 Highland Lakes - Student Head Count**

	<u>1995</u>	<u>1996</u>	<u>1997</u>	<u>1998</u>	<u>1999</u>	<u>2000</u>	<u>2001</u>	<u>1 Year % Change</u>	<u>5 Year % Change</u>
<b>Actual One Tenth Day Enrollment</b>	515	395	371	322	325	394	395	0.3%	6.5%

**Actual One Tenth Day Student Headcount  
 Highland Lakes  
 Summer Term**



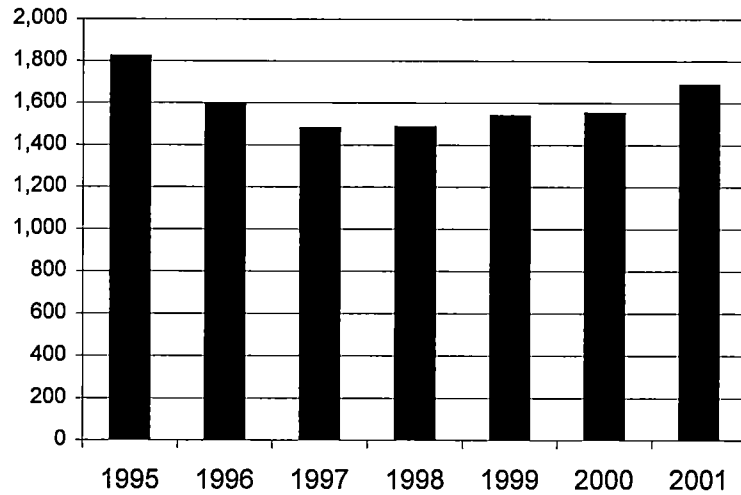
**Student Headcount Summary**



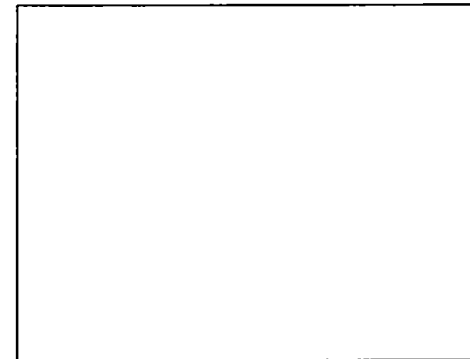
**Oakland Community College  
 Official Enrollment Report  
 One Tenth Day of Enrollment, Summer 2001  
 Orchard Ridge - Student Head Count**

	<u>1995</u>	<u>1996</u>	<u>1997</u>	<u>1998</u>	<u>1999</u>	<u>2000</u>	<u>2001</u>	<u>1 Year % Change</u>	<u>5 Year % Change</u>
<b>Actual One Tenth Day Enrollment</b>	1,818	1,591	1,476	1,482	1,535	1,549	1,683	8.7%	14.0%

**Actual One Tenth Day Student Headcount  
 Orchard Ridge  
 Summer Term**

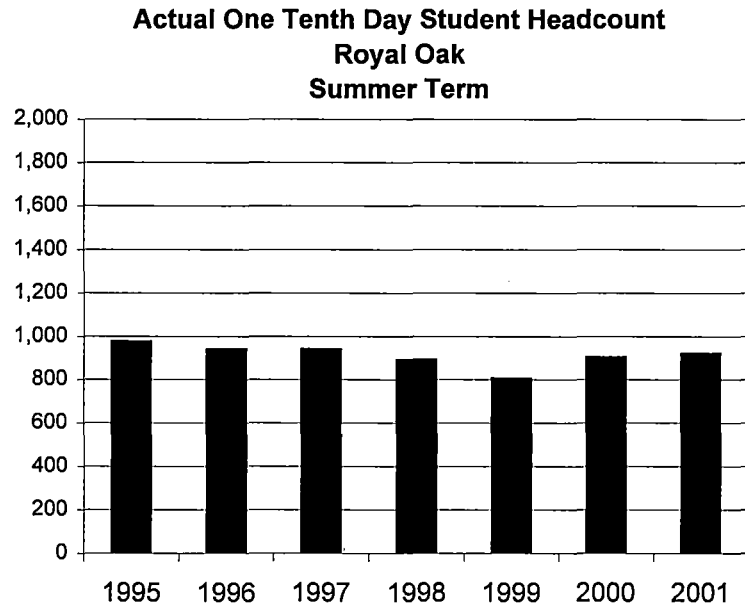


**Student Headcount Summary**

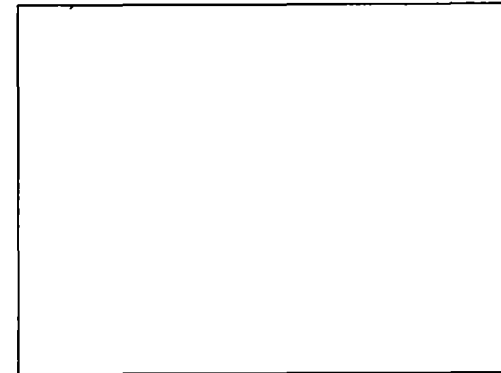


**Oakland Community College  
 Official Enrollment Report  
 One Tenth Day of Enrollment, Summer 2001  
 Royal Oak - Student Head Count**

	<u>1995</u>	<u>1996</u>	<u>1997</u>	<u>1998</u>	<u>1999</u>	<u>2000</u>	<u>2001</u>	<u>Change</u>	<u>Change</u>
<b>Actual One Tenth Day Enrollment</b>	973	937	938	889	803	901	919	2.0%	-2.0%



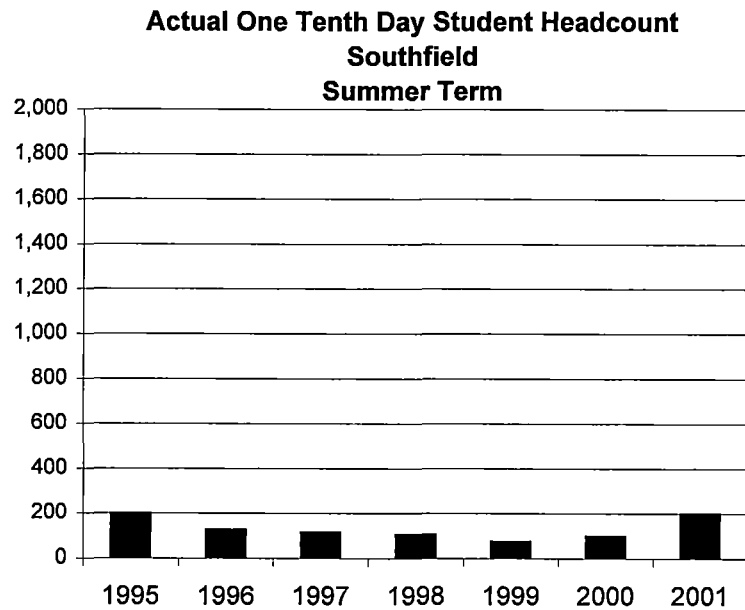
**Student Headcount Summary**



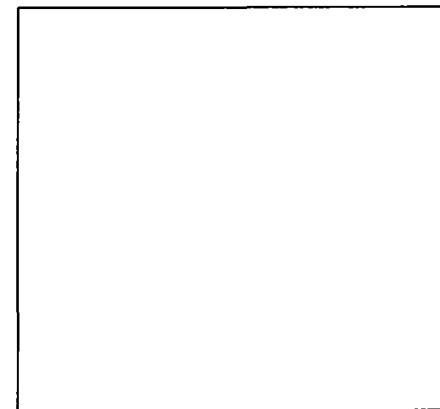


**Oakland Community College  
 Official Enrollment Report  
 One Tenth Day of Enrollment, Summer 2001  
 Southfield - Student Head Count**

	<u>1995</u>	<u>1996</u>	<u>1997</u>	<u>1998</u>	<u>1999</u>	<u>2000</u>	<u>2001</u>	<u>Change</u>	<u>Change</u>
<b>Actual One Tenth Day Enrollment</b>	196	124	113	103	71	96	197	105.2%	74.3%



**Student Headcount Summary**

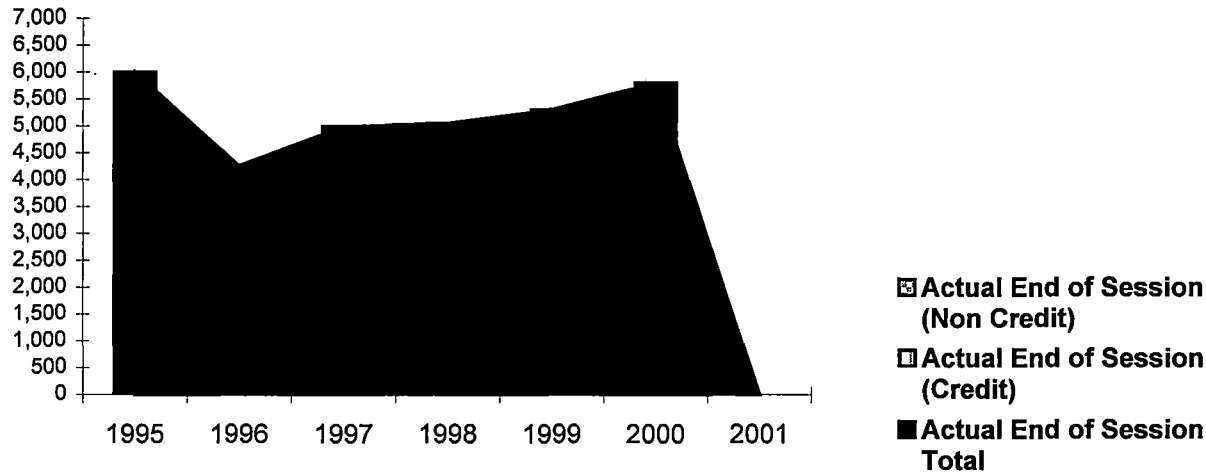


**Oakland Community College  
Official Enrollment Report  
End of Session Enrollment, Summer 2001  
College-wide - Student Head Count**

	<u>1995</u>	<u>1996</u>	<u>1997</u>	<u>1998</u>	<u>1999</u>	<u>2000</u>	<u>2001</u>	<u>1 Year % Change</u>	<u>5 Year % Change</u>
<b>Projected Headcount</b>	4,454	4,652	2,451	5,000	5,047	5,037	5,300		
<b>Actual End of Session (Credit)</b>	4,536	4,098	3,916	3,868	3,659	3,866	0	-100.0%	-100.0%
<b>Actual End of Session (Non Credit)</b>	1,457	147	1,068	1,179	1,641	1,938	0		
<b>Actual End of Session Total</b>	5,993	4,245	4,984	5,047	5,300	5,804	0		
<b>% of Projected</b>	134.6%	91.3%	203.3%	100.9%	105.0%	115.2%	0.0%		

**End of Session Headcount-Collegewide  
Summer Term**

analysis to come with EOS numbers  
on April 30

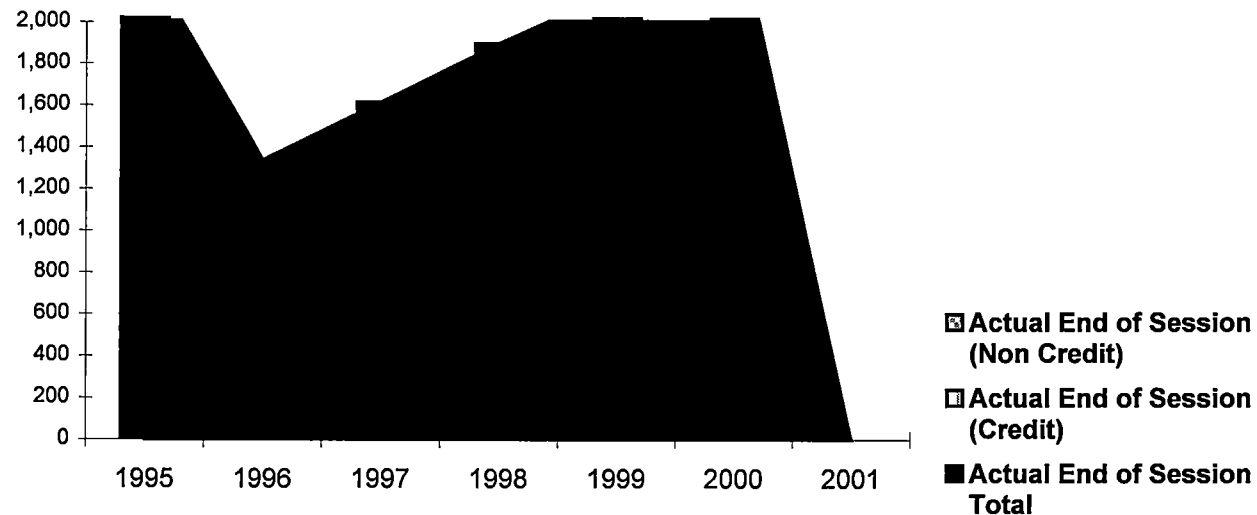


Headcount totals with credit and noncredit proportions depicted.

**Oakland Community College  
Official Enrollment Report  
End of Session Enrollment, Summer 2001  
Auburn Hills - Student Head Count**

	<u>1995</u>	<u>1996</u>	<u>1997</u>	<u>1998</u>	<u>1999</u>	<u>2000</u>	<u>2001</u>	<u>1 Year % Change</u>	<u>5 Year % Change</u>
<b>Actual End of Session (Credit)</b>	1,426	1,201	1,204	1,195	1,086	1,068	0	-100.0%	-100.0%
<b>Actual End of Session (Non Credit)</b>	874	135	411	702	1,070	1,464	0	-100.0%	-100.0%
<b>Actual End of Session Total</b>	2,300	1,336	1,615	1,897	2,156	2,532	0		

**End of Session Headcount - Auburn Hills  
Summer Term**

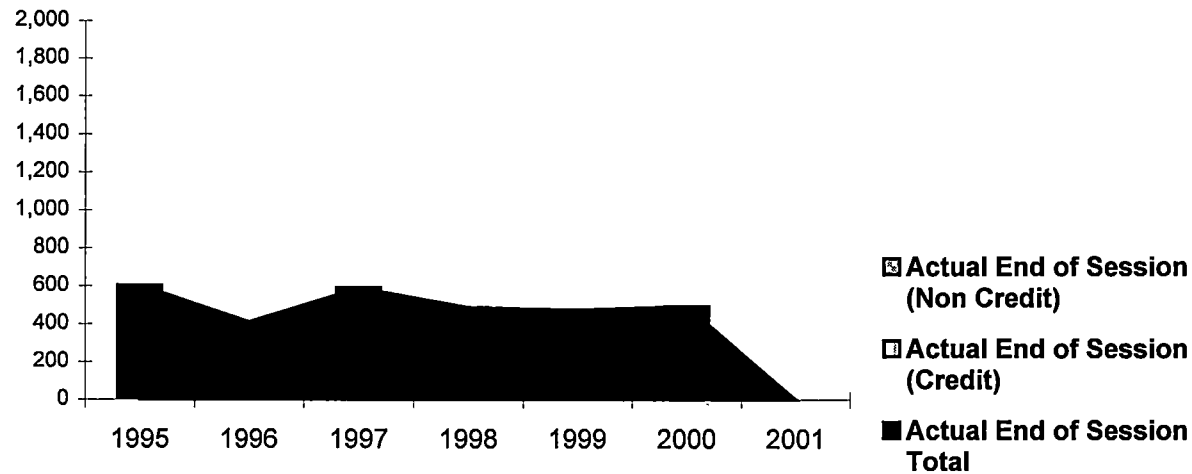


Headcount totals with credit and noncredit proportions depicted.

**Oakland Community College  
Official Enrollment Report  
End of Session Enrollment, Summer 2001  
Highland Lakes - Student Head Count**

	<u>1995</u>	<u>1996</u>	<u>1997</u>	<u>1998</u>	<u>1999</u>	<u>2000</u>	<u>2001</u>	<u>1 Year % Change</u>	<u>5 Year % Change</u>
<b>Actual End of Session (Credit)</b>	480	404	371	340	325	400	0	-100.0%	-100.0%
<b>Actual End of Session (Non Credit)</b>	122	3	217	146	149	93	0	-100.0%	-100.0%
<b>Actual End of Session Total</b>	602	407	588	486	474	493	0		

**End of Session Headcount - Highland Lakes  
Summer Term**

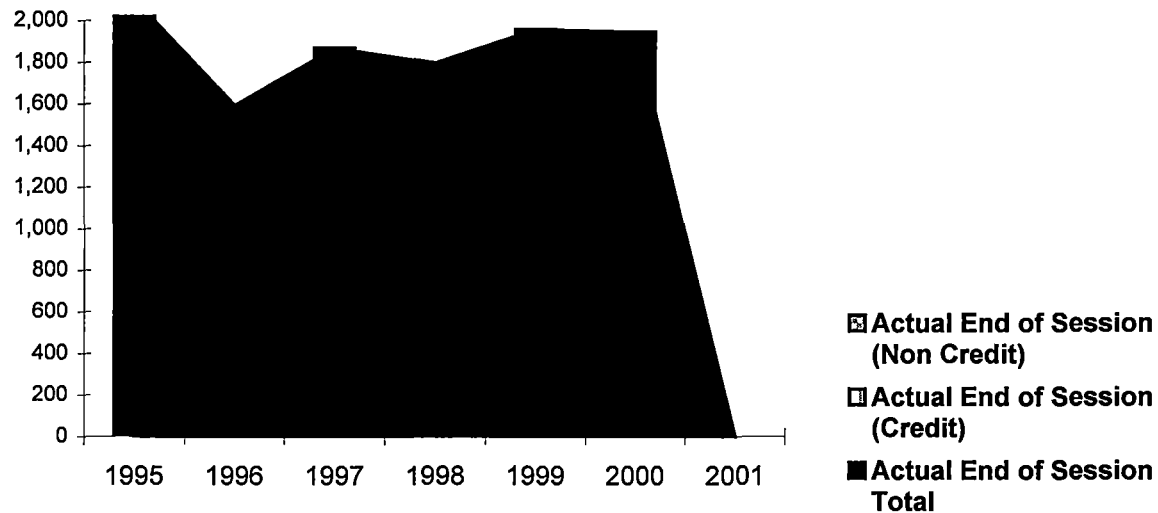


Headcount totals with credit and noncredit proportions depicted.

**Oakland Community College  
 Official Enrollment Report  
 End of Session Enrollment, Summer 2001  
 Orchard Ridge - Student Head Count**

	<u>1995</u>	<u>1996</u>	<u>1997</u>	<u>1998</u>	<u>1999</u>	<u>2000</u>	<u>2001</u>	<u>1 Year % Change</u>	<u>5 Year % Change</u>
<b>Actual End of Session (Credit)</b>	1,750	1,591	1,476	1,482	1,535	1,563	0	-100.0%	-100.0%
<b>Actual End of Session (Non Credit)</b>	350	0	392	313	422	381	0	-100.0%	-100.0%
<b>Actual End of Session Total</b>	2,100	1,591	1,868	1,795	1,957	1,944	0		

**End of Session Headcount - Orchard Ridge  
 Summer Term**

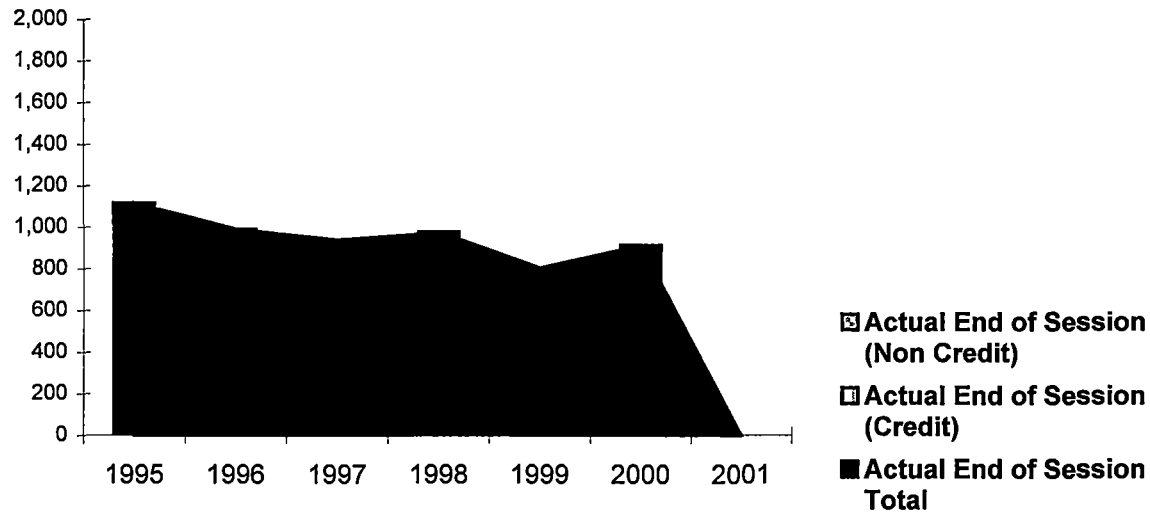


Headcount totals with credit and noncredit proportions depicted.

**Oakland Community College  
 Official Enrollment Report  
 End of Session Enrollment, Summer 2001  
 Royal Oak - Student Head Count**

	<u>1995</u>	<u>1996</u>	<u>1997</u>	<u>1998</u>	<u>1999</u>	<u>2000</u>	<u>2001</u>	<u>1 Year % Change</u>	<u>5 Year % Change</u>
<b>Actual End of Session (Credit)</b>	970	988	938	947	803	913	0	-100.0%	-100.0%
<b>Actual End of Session (Non Credit)</b>	145	1	0	28	0	0	0	#DIV/0!	#DIV/0!
<b>Actual End of Session Total</b>	1,115	989	938	975	803	913	0		

**End of Session Headcount - Royal Oak  
 Summer Term**

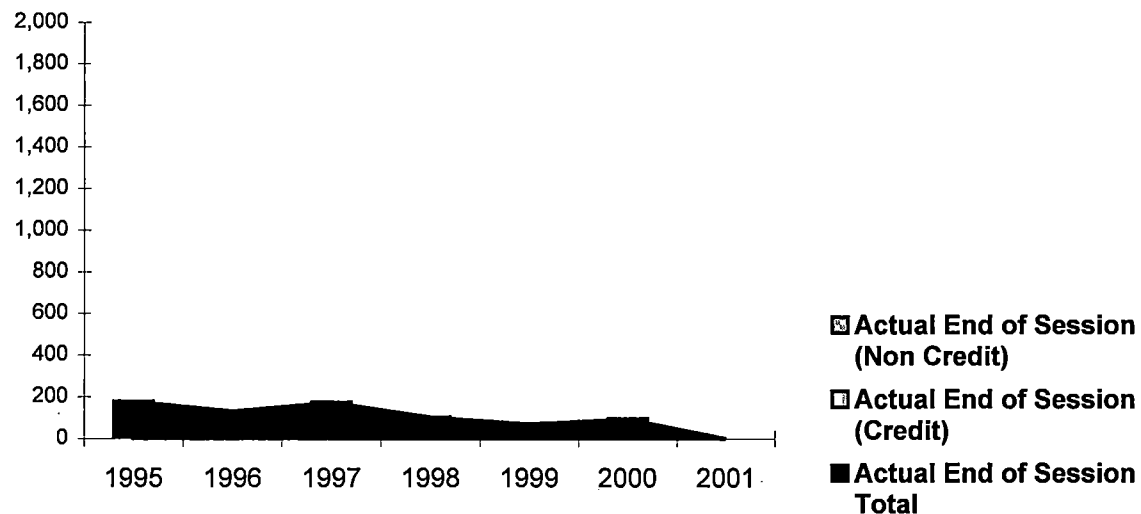


Headcount totals with credit and noncredit proportions depicted.

**Oakland Community College  
 Official Enrollment Report  
 End of Session Enrollment, Summer 2001  
 Southfield - Student Head Count**

	<u>1995</u>	<u>1996</u>	<u>1997</u>	<u>1998</u>	<u>1999</u>	<u>2000</u>	<u>2001</u>	<u>1 Year % Change</u>	<u>5 Year % Change</u>
<b>Actual End of Session (Credit)</b>	178	124	126	103	71	96	0	-100.0%	-100.0%
<b>Actual End of Session (Non Credit)</b>	0	8	48	0	0	0	0	#DIV/0!	-100.0%
<b>Actual End of Session Total</b>	178	132	174	103	71	96	0		

**End of Session Headcount - Southfield  
 Summer Term**



Headcount totals with credit and noncredit proportions depicted.

future reports

Title

Source

Date

Analysis text box

Footnote what projections mean (credit/non-credit + end of session)

Six views: College, AH, HI, OR, RO, SF

Graph trend in projections (all campuses)

Graph Actual (all campuses)

Depict graphically percent of projections

Then for 1/10 day view

Compare 1<sup>st</sup> day to 1/10 day trend

Then at end of session:

Compare 1<sup>st</sup> day, 1/10 day and end of session trends

/// Report / Full XLS

1/9. / of / Du / Act / On other



**Oakland Community College  
Official Enrollment  
Fall Term**

**College-Wide Totals**

**Credit Hours**

	2001	2000	1999	1998	1997	1996	1995	1994
Projected	187,229	185,949	186,302	180,159	171,256	194,556	208,551	221,067
Actual First Day Enrollment	183,496	178,659	174,761	180,674	175,228	186,724	194,909	208,769
Actual One Tenth Day Enrollment		178,527	176,377	182,443	179,348	187,734	196,120	206,389
Actual End of Session (Credit)		179,957	177,759	183,261	180,471	186,689	199,443	208,551
Actual End of Session (Non Credit)		9,063	5,158	3,041	3,168	4,678	6,600	5,035
Actual End of Session Total		189,020	182,664	186,302	183,639	191,367	206,043	213,586

**Headcount**

	2001	2000	1999	1998	1997	1996	1995	1994
Projected Headcount	27,000	27,201	27,253	27,880	28,006	26,604	27,511	29,032
Actual First Day Enrollment	23,165	23,079	22,932	23,957	23,558	24,300	25,691	26,664
Actual One Tenth Day Enrollment		23,400	23,445	24,455	24,443	24,941	26,144	27,129
Actual End of Session (Credit)		23,619	23,611	24,566	24,684	25,178	25,950	27,647
Actual End of Session (Non Credit)	0	6,004	3,390	2,687	2,885	6,036	2,271	2,607
Actual End of Session Total		29,623	27,001	27,253	27,569	31,214	28,221	30,254

**Credit Hours Per Student**

	2001	2000	1999	1998	1997	1996	1995	1994
Actual First Day Enrollment Credit Hours	183,496	178,659	174,761	180,674	175,228	186,724	194,909	208,769
Actual First Day Enrollment Headcount	23,165	23,079	22,932	23,957	23,558	24,300	25,691	26,664
Actual OneTenth Day Credit Hours		178,527	176,377	182,443	179,348	187,734	196,120	206,389
Actual OneTenth Day Headcount		23,400	23,445	24,455	24,443	24,941	26,144	27,129







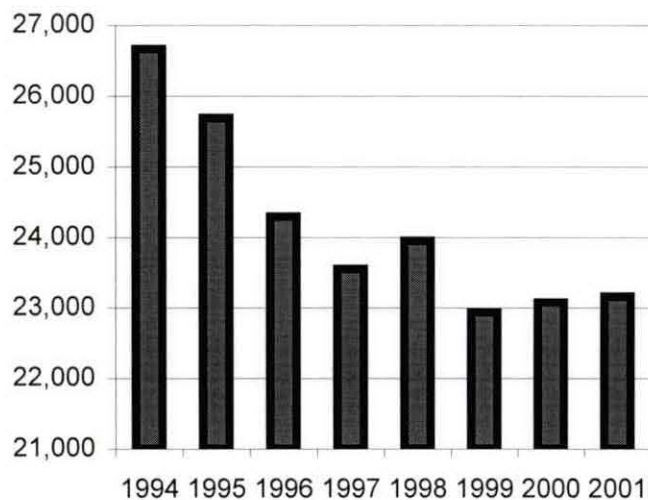




**Oakland Community College  
 Official Enrollment Report  
 First Day of Session, Fall 2001  
 College-wide - Student Head Count**

	<u>1994</u>	<u>1995</u>	<u>1996</u>	<u>1997</u>	<u>1998</u>	<u>1999</u>	<u>2000</u>	<u>2001</u>	<u>1 Year % Change</u>	<u>5 Year % Change</u>
<b>Projected Headcount</b>	29,032	27,511	26,604	28,006	27,880	27,253	27,201	27,000		
<b>Actual First Day Enrollment</b>	26,664	25,691	24,300	23,558	23,957	22,932	23,079	23,165	0.4%	-1.7%
<b>% of Projected</b>	91.8%	93.4%	91.3%	84.1%	85.9%	84.1%	84.8%	85.8%		

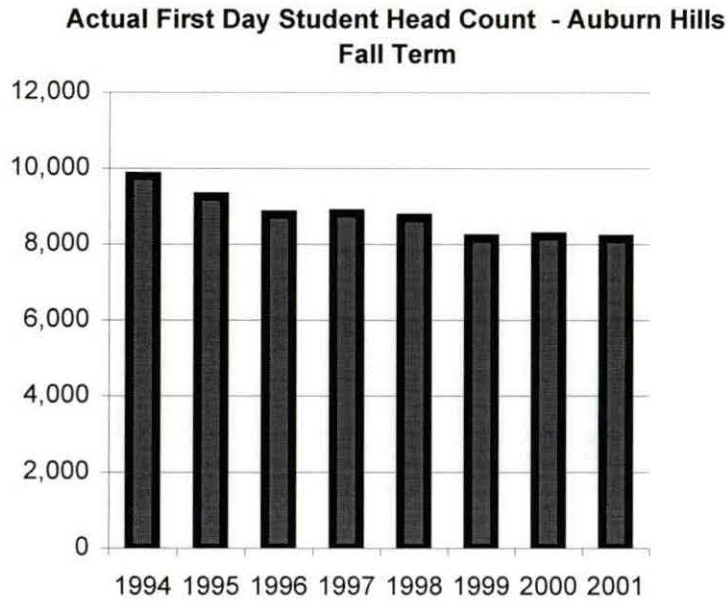
**Actual First Day Student Head Count - Collegewide  
 Fall Term**



**Headcount Summary**

**Oakland Community College  
 Official Enrollment Report  
 First Day of Session, Fall 2001  
 Auburn Hills - Headcount**

	<u>1994</u>	<u>1995</u>	<u>1996</u>	<u>1997</u>	<u>1998</u>	<u>1999</u>	<u>2000</u>	<u>2001</u>	<u>1 Year % Change</u>	<u>5 Year % Change</u>
<b>Actual First Day Enrollment</b>	9,785	9,257	8,779	8,813	8,697	8,162	8,207	8,143	-0.8%	-7.6%



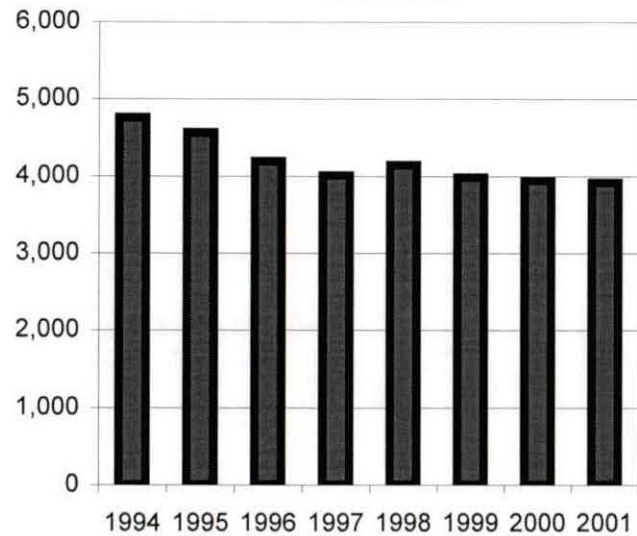
Headcount Summary



**Oakland Community College  
 Official Enrollment Report  
 First Day of Session, Fall 2001  
 Highland Lakes - Headcount**

	<u>1994</u>	<u>1995</u>	<u>1996</u>	<u>1997</u>	<u>1998</u>	<u>1999</u>	<u>2000</u>	<u>2001</u>	<u>1 Year % Change</u>	<u>5 Year % Change</u>
<b>Actual First Day Enrollment</b>	4,763	4,566	4,199	4,012	4,148	3,985	3,944	3,921	-0.6%	-2.3%

**Actual First Day Student Head Count - Highland Lakes  
 Fall Term**



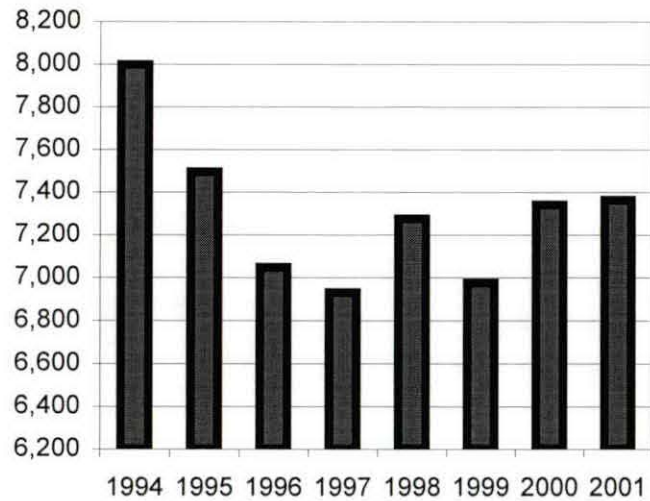
Headcount Summary

**Oakland Community College  
 Official Enrollment Report  
 First Day of Session, Fall 2000<sup>1</sup>  
 Orchard Ridge - Headcount**

	<u>1994</u>	<u>1995</u>	<u>1996</u>	<u>1997</u>	<u>1998</u>	<u>1999</u>	<u>2000</u>	<u>2001</u>	<u>1 Year % Change</u>	<u>5 Year % Change</u>
<b>Actual First Day Enrollment</b>	7,998	7,496	7,048	6,931	7,275	6,976	7,342	7,364	0.3%	6.2%

**Actual First Day Student Head Count - Orchard Ridge  
 Fall Term**

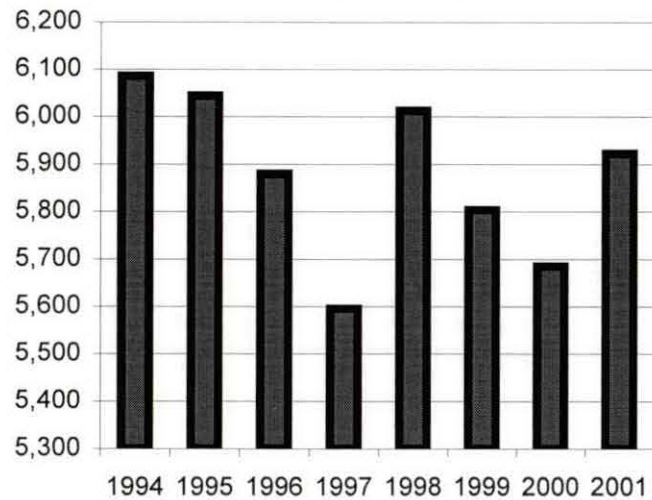
Headcount Summary



**Oakland Community College  
 Official Enrollment Report  
 First Day of Session, Fall 2000  
 Royal Oak - Headcount**

	<u>1994</u>	<u>1995</u>	<u>1996</u>	<u>1997</u>	<u>1998</u>	<u>1999</u>	<u>2000</u>	<u>2001</u>	<u>1 Year % Change</u>	<u>5 Year % Change</u>
<b>Actual First Day Enrollment</b>	6,086	6,044	5,880	5,595	6,013	5,804	5,685	5,923	4.2%	5.9%

**Actual First Day Student Head Count - Royal Oak  
 Fall Term**



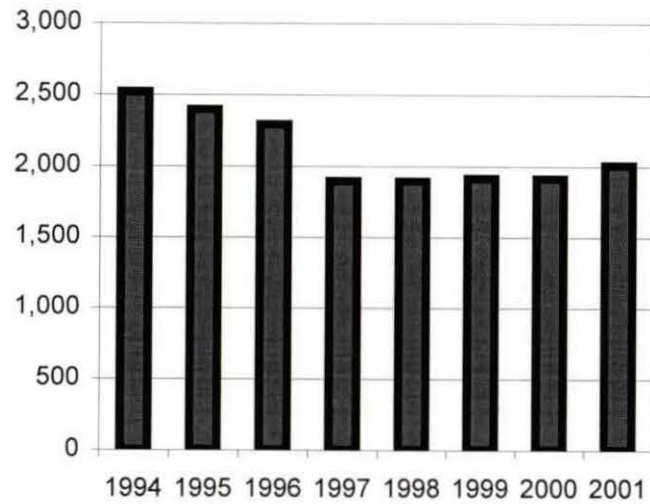
Headcount Summary

**Oakland Community College  
 Official Enrollment Report  
 First Day of Session, Fall 2000  
 Southfield - Headcount**

	<u>1994</u>	<u>1995</u>	<u>1996</u>	<u>1997</u>	<u>1998</u>	<u>1999</u>	<u>2000</u>	<u>2001</u>	<u>1 Year % Change</u>	<u>5 Year % Change</u>
<b>Actual First Day Enrollment</b>	2,520	2,397	2,293	1,897	1,894	1,917	1,915	2,008	4.9%	5.9%

Headcount Summary

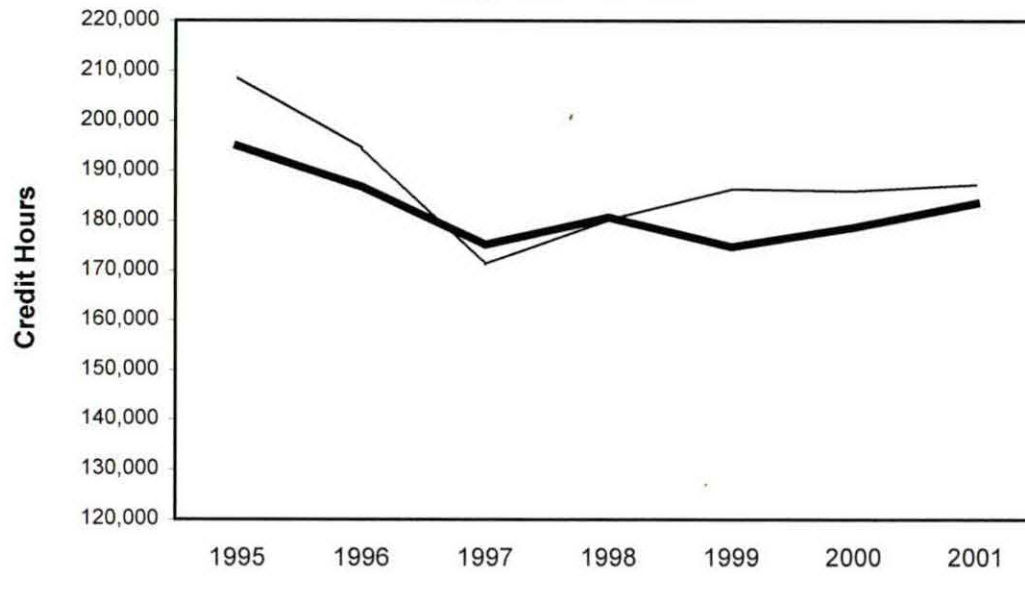
**Actual First Day Student Head Count -Southfield  
 Fall Term**



**Oakland Community College  
Official Enrollment Report  
First Day of Session, Fall 2001  
College-wide - Student Credit Hours**

	1995	1996	1997	1998	1999	2000	2001	1 Year % Change	5 Year % Change
Projected *	208,551	194,556	171,256	180,159	186,302	185,949	187,229	0.7%	9.3%
Actual First Day Enrollment	194,909	186,724	175,228	180,674	174,761	178,659	183,496	2.7%	4.7%
% of Projected	93.5%	96.0%	102.3%	100.3%	93.8%	96.1%	98.0%		

**Actual First Day  
Enrollment Compared to Projections  
College-wide - Fall Term**



**Analysis**

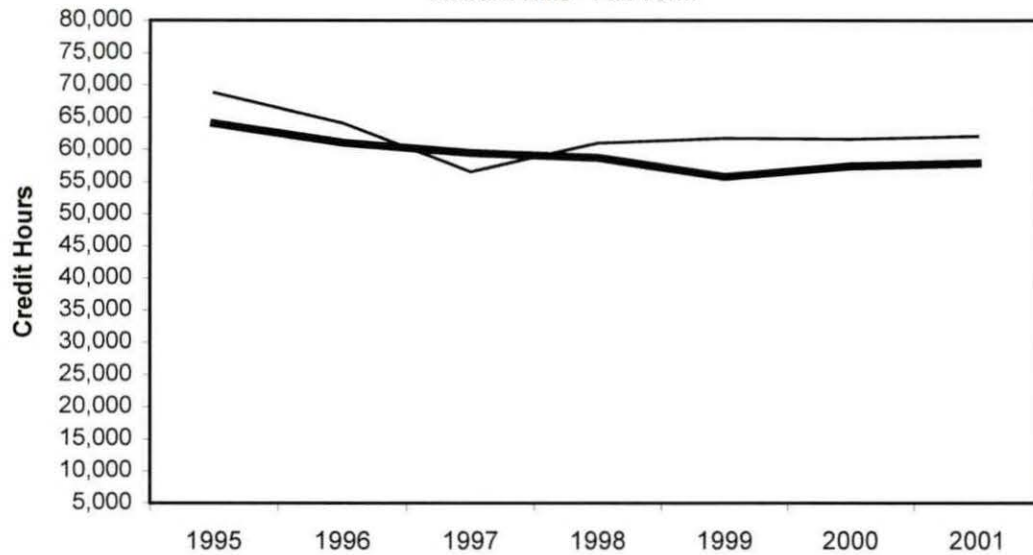
Credit hours, as of the first day of the Fall 2000 session, are at 96.1% of projections. In comparison to the first day of the Fall 1999 session, credit hours were up 2.2%.

\*Projections include credit, as well as non-credit courses and reflect estimated end of session targets.

**Oakland Community College  
Official Enrollment Report  
First Day of Session, Fall 2001  
Auburn Hills - Student Credit Hours**

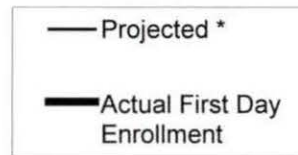
	1994	1995	1996	1997	1998	1999	2000	2001	1 Year % Change	5 Year % Change
Projected *	75,540	68,772	64,028	56,520	60,945	61,692	61,574	61,999	0.7%	9.7%
Actual First Day Enrollment	60,004	63,985	61,019	59,439	58,688	55,751	57,410	57,810	0.7%	-2.7%
% of Projected	90.0%	93.0%	95.3%	105.2%	96.3%	90.4%	93.2%	93.2%		

**Actual First Day Enrollment  
Compared to Projections  
Auburn Hills - Fall Term**



**Analysis**

Credit hours, as of the first day of the Fall 2000 session, are at 93.2% of projections. In comparison to the first day of the Fall 1999 session, credit hours were up 3%.

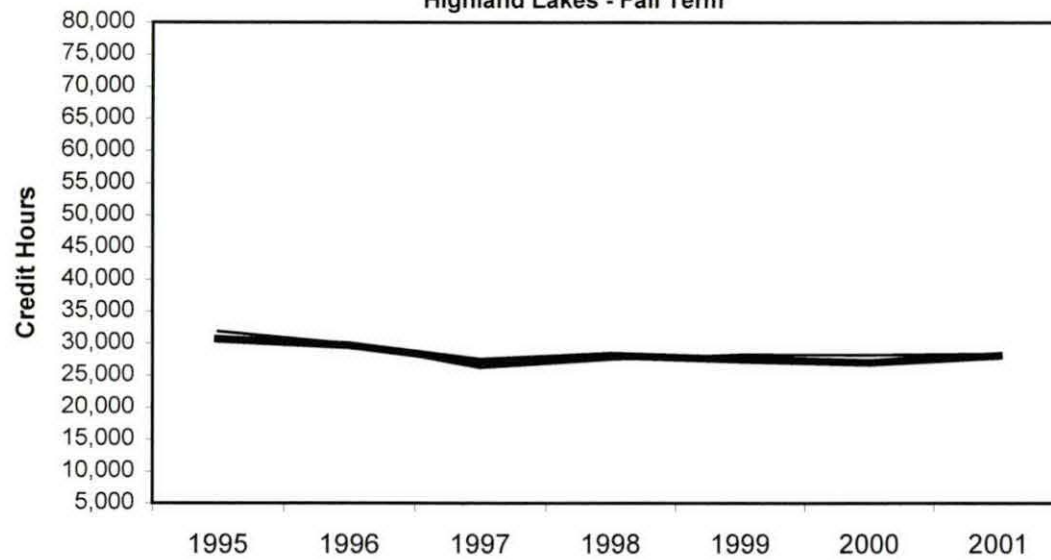


\*Projections include credit, as well as non-credit courses and reflect estimated end of session targets.

**Oakland Community College  
 Official Enrollment Report  
 First Day of Session, Fall 2001  
 Highland Lakes - Student Credit Hours**

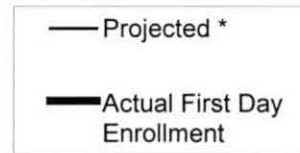
	1995	1996	1997	1998	1999	2000	2001	1 Year % Change	5 Year % Change
Projected *	31,873	29,918	26,159	27,476	28,224	28,171	28,364	0.7%	8.4%
Actual First Day Enrollment	30,644	29,690	27,145	28,089	27,486	26,968	28,054	4.0%	3.3%
% of Projected	96.1%	99.2%	103.8%	102.2%	97.4%	95.7%	98.9%		

**Actual First Day Enrollment  
 Compared to Projections  
 Highland Lakes - Fall Term**



**Analysis**

Credit hours, as of the first day of the Fall 2000 session, are at 95.7% of projections. In comparison to the first day of the Fall 1999 session, credit hours were down 1.9%.  
 The five year percentage of change is down 9.2%.



\*Projections include credit, as well as non-credit courses and reflect estimated end of session targets.

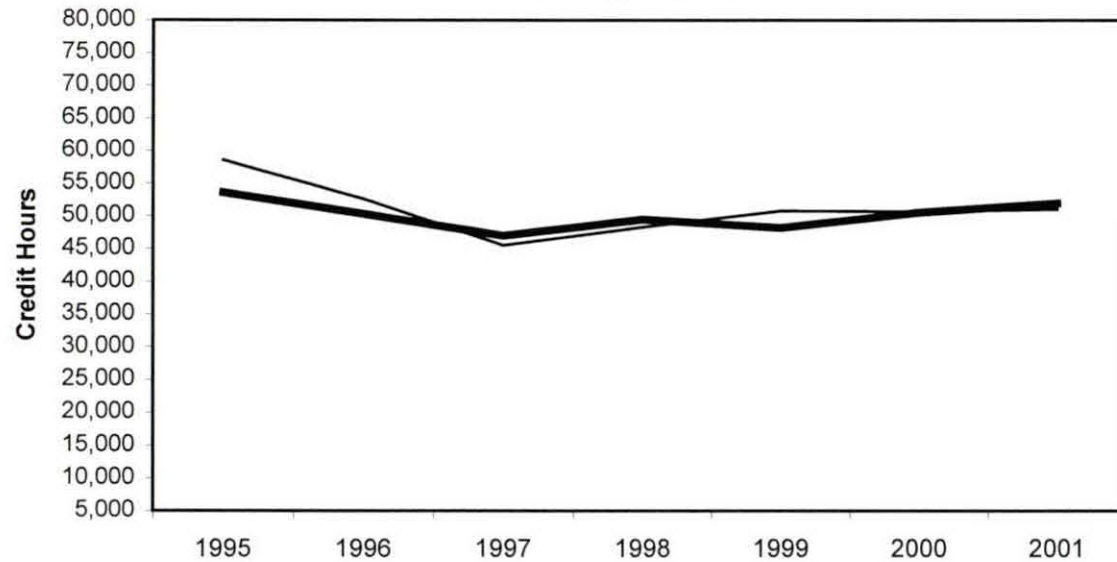
**Oakland Community College  
Official Enrollment Report  
First Day of Session, Fall 2001  
Orchard Ridge - Student Credit Hours**

	1995	1996	1997	1998	1999	2000	2001	1 Year % Change	5 Year % Change
Projected *	58,541	52,610	45,509	48,287	50,799	50,703	51,052	0.7%	12.2%
Actual First Day Enrollment	53,575	50,325	46,969	49,487	48,209	50,570	51,987	2.8%	10.7%
% of Projected	91.5%	95.7%	103.2%	102.5%	94.9%	99.7%	101.8%		

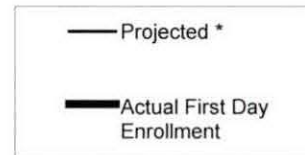
1994  
42,100  
58,574

**Actual First Day Enrollment  
Compared to Projections  
Orchard Ridge - Fall Term**

**Analysis**



Credit hours, as of the first day of the Fall 2000 session, are at 99.7% of projections. In comparison to the first day of the Fall 1999 session, credit hours were up 4.9%.  
The five year percentage of change is up 0.5%.



\*Projections include credit, as well as non-credit courses and reflect estimated end of session targets.

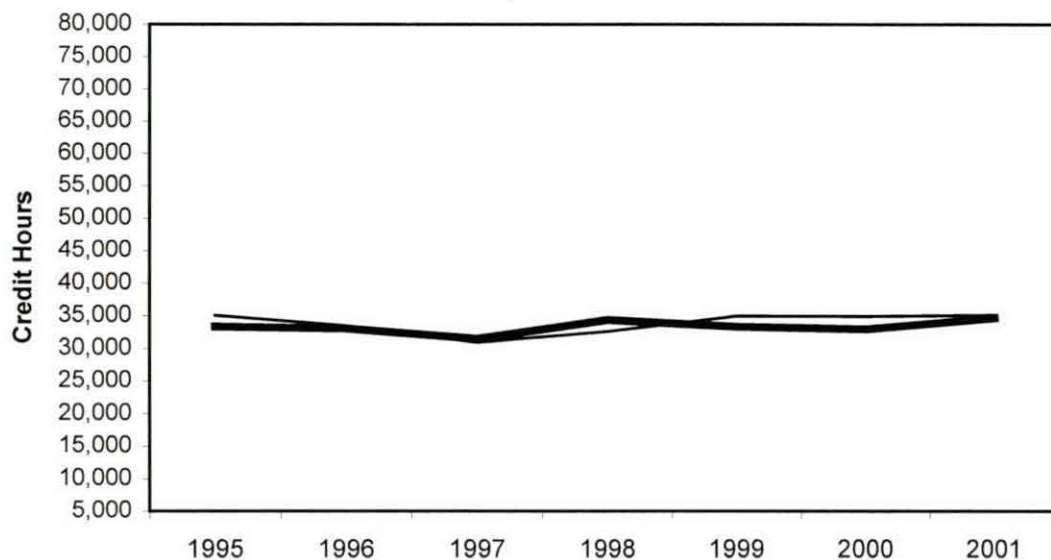


**Oakland Community College  
Official Enrollment Report  
First Day of Session, Fall 2001  
Royal Oak - Student Credit Hours**

	1995	1996	1997	1998	1999	2000	2001	1 Year % Change	5 Year % Change
Projected *	35,049	33,500	30,923	32,607	34,956	34,890	35,130	0.7%	13.6%
Actual First Day Enrollment	33,336	33,043	31,477	34,372	33,317	32,952	34,666	5.2%	10.1%
% of Projected	95.1%	98.6%	101.8%	105.4%	95.3%	94.4%	98.7%		

*1994  
35,761  
34,977*

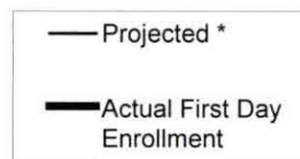
**Actual First Day Enrollment  
Compared to Projections  
Royal Oak - Fall Term**



**Analysis**

Credit hours, as of the first day of the Fall 2000 session, are at 94.4% of projections. In comparison to the first day of the Fall 1999 session, credit hours were down 1.1%.

The five year percentage of change is down 0.3%.



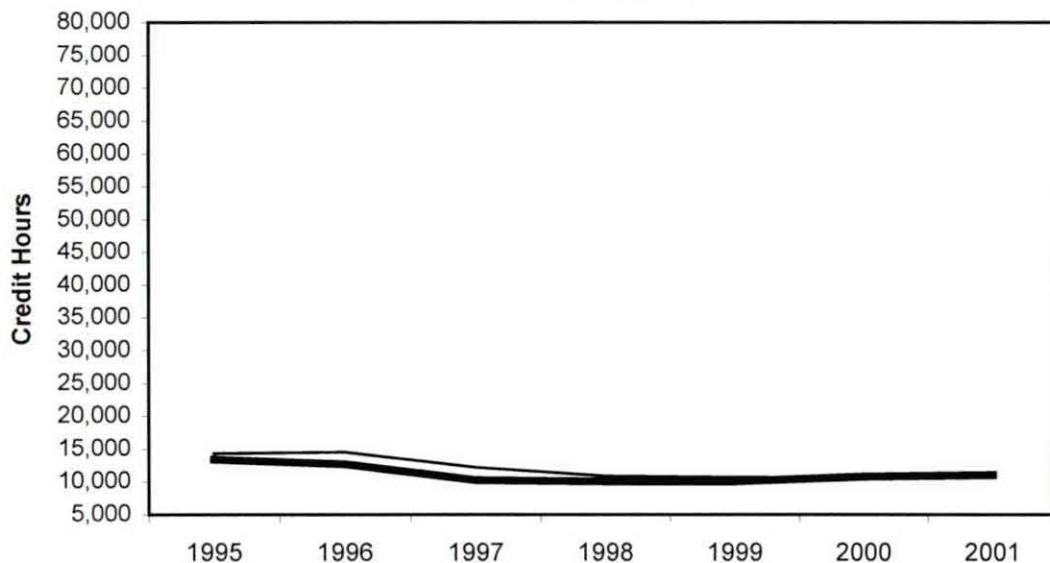
\*Projections include credit, as well as non-credit courses and reflect estimated end of session targets.

**Oakland Community College  
Official Enrollment Report  
First Day of Session, Fall 2001  
Southfield - Student Credit Hours**

	<u>1995</u>	<u>1996</u>	<u>1997</u>	<u>1998</u>	<u>1999</u>	<u>2000</u>	<u>2001</u>	<u>1 Year % Change</u>	<u>5 Year % Change</u>
Projected *	14,316	14,500	12,145	10,844	10,631	10,611	10,684	0.7%	-12.0%
Actual First Day Enrollment	13,369	12,648	10,199	10,038	9,998	10,759	10,980	2.0%	7.7%
% of Projected	93.4%	87.2%	84.0%	92.6%	94.0%	101.4%	102.8%		

**Actual First Day Enrollment  
Compared to Projections  
Southfield - Fall Term**

**Analysis**



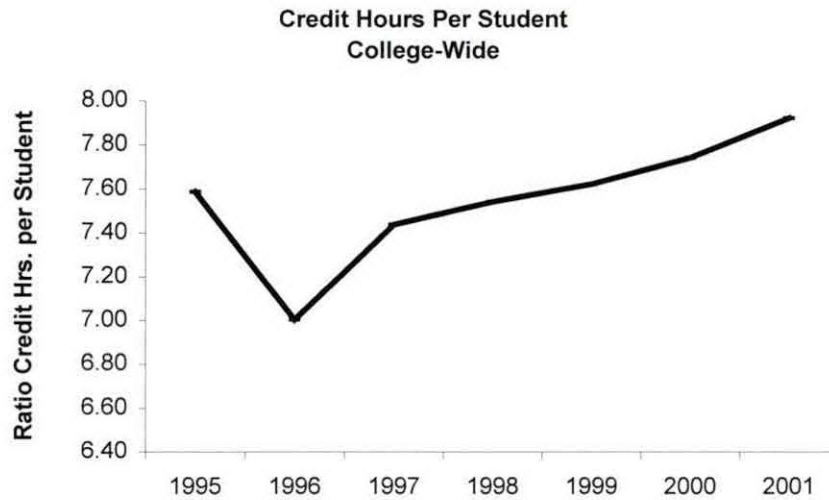
Credit hours, as of the first day of the Fall 2000 session, are at 101.4% of projections. In comparison to the first day of the Fall 1999 session, credit hours were up 7.6%. The five year percentage of change is down 14.9%.

— Projected \*  
— Actual First Day Enrollment

\*Projections include credit, as well as non-credit courses and reflect estimated end of session targets.

**Oakland Community College  
 Official Enrollment Report  
 First Day of Session, Fall 2001  
 College-wide - Credit Hours Per Student**

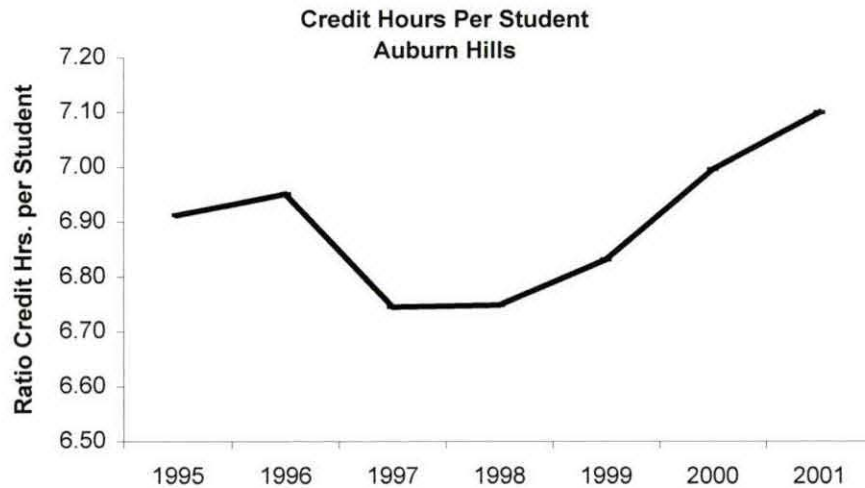
	<u>1995</u>	<u>1996</u>	<u>1997</u>	<u>1998</u>	<u>1999</u>	<u>2000</u>	<u>2001</u>	<u>1 Year % Change</u>	<u>5 Year % Change</u>
Actual First Day Credit Hours	194,909	186,724	175,228	180,674	174,761	178,659	183,496	2.7%	4.7%
Actual First Day Headcount	25,691	26,664	23,558	23,957	22,932	23,079	23,165	0.4%	-1.7%
Credit Hours Per Student	7.59	7.00	7.44	7.54	7.62	7.74	7.92	2.3%	6.5%



**Summary**

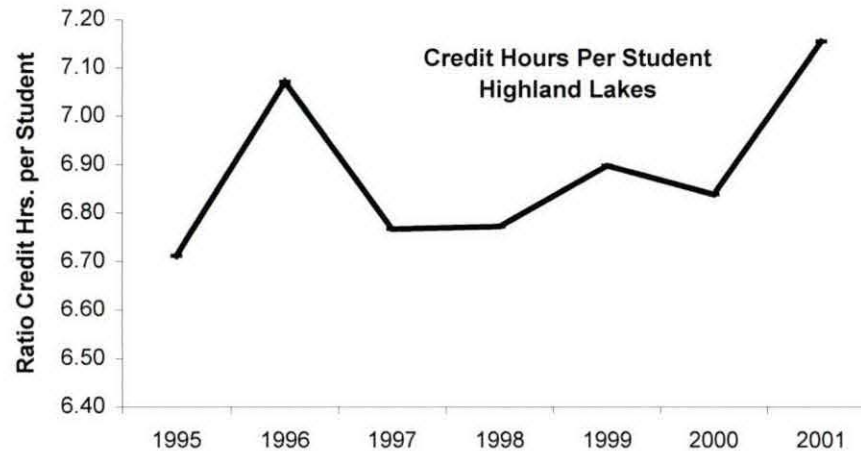
**Oakland Community College  
 Official Enrollment Report  
 First Day of Session, Fall 2001  
 Auburn Hills - Credit Hours Per Student**

	<u>1995</u>	<u>1996</u>	<u>1997</u>	<u>1998</u>	<u>1999</u>	<u>2000</u>	<u>2001</u>	<u>1 Year % Change</u>	<u>5 Year % Change</u>
Actual First Day Credit Hours	63,985	61,019	59,439	58,688	55,751	57,410	57,810	0.7%	-2.7%
Actual First Day Headcount	9,257	8,779	8,813	8,697	8,162	8,207	8,143	-0.8%	-7.6%
Credit Hours Per Student	6.91	6.95	6.74	6.75	6.83	7.00	7.10	1.5%	5.3%



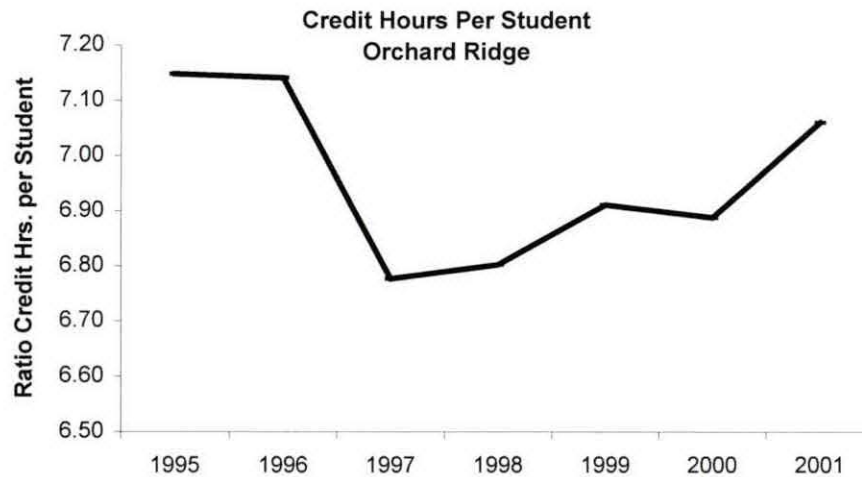
**Oakland Community College  
 Official Enrollment Report  
 First Day of Session, Fall 2001  
 Highland Lakes - Credit Hours Per Student**

	<u>1995</u>	<u>1996</u>	<u>1997</u>	<u>1998</u>	<u>1999</u>	<u>2000</u>	<u>2001</u>	<u>1 Year % Change</u>	<u>5 Year % Change</u>
Actual First Day Credit Hours	30,644	29,690	27,145	28,089	27,486	26,968	28,054	4.0%	3.3%
Actual First Day Headcount	4,566	4,199	4,012	4,148	3,985	3,944	3,921	-0.6%	-2.3%
Credit Hours Per Student	6.71	7.07	6.77	6.77	6.90	6.84	7.15	4.6%	5.7%



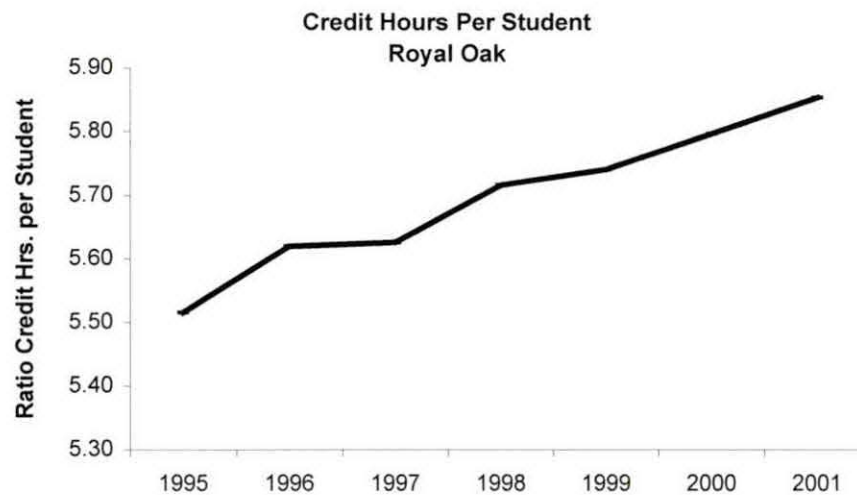
**Oakland Community College  
 Official Enrollment Report  
 First Day of Session, Fall 2001  
 Orchard Ridge - Credit Hours Per Student**

	1995	1996	1997	1998	1999	2000	2001	1 Year % Change	5 Year % Change
Actual First Day Credit Hours	53,575	50,325	46,969	49,487	48,209	50,570	51,987	2.8%	10.7%
Actual First Day Headcount	7,496	7,048	6,931	7,275	6,976	7,342	7,364	0.3%	6.2%
Credit Hours Per Student	7.15	7.14	6.78	6.80	6.91	6.89	7.06	2.5%	4.2%



**Oakland Community College  
 Official Enrollment Report  
 First Day of Session, Fall 2001  
 Royal Oak - Credit Hours Per Student**

	<u>1995</u>	<u>1996</u>	<u>1997</u>	<u>1998</u>	<u>1999</u>	<u>2000</u>	<u>2001</u>	<u>1 Year % Change</u>	<u>5 Year % Change</u>
Actual First Day Credit Hours	33,336	33,043	31,477	34,372	33,317	32,952	34,666	5.2%	10.1%
Actual First Day Headcount	6,044	5,880	5,595	6,013	5,804	5,685	5,923	4.2%	5.9%
Credit Hours Per Student	5.52	5.62	5.63	5.72	5.74	5.80	5.85	1.0%	4.0%



**Oakland Community College  
 Official Enrollment Report  
 First Day of Session, Fall 2001  
 Southfield - Credit Hours Per Student**

	<u>1995</u>	<u>1996</u>	<u>1997</u>	<u>1998</u>	<u>1999</u>	<u>2000</u>	<u>2001</u>	<u>1 Year % Change</u>	<u>5 Year % Change</u>
Actual First Day Credit Hours	13,369	12,648	10,199	10,038	9,998	10,759	10,980	2.0%	7.7%
Actual First Day Headcount	2,397	2,293	1,897	1,894	1,917	1,915	2,008	4.9%	5.9%
Credit Hours Per Student	5.58	5.52	5.38	5.30	5.22	5.62	5.47	-2.7%	1.7%

